



# **Pennsylvania State Rabbit Convention**

**Friday, February 4 - Sunday, February 6, 2022**

**Lebanon Expo Center  
80 Rocherty Rd., Lebanon, PA 17042**

**MARK YOUR CALENDARS FOR ONE OF THE  
LARGEST SHOWS IN THE COUNTRY!**

**PASRBA SPONSORED SHOWS NOW  
PRE-ENTRY THIS YEAR.**

***DAY OF SHOW WILL NOT BE ACCEPTED.***

**PLEASE SEE PAGE 8 FOR MORE  
INSTRUCTIONS**

## **SHOW SPONSORS**

**POINTER HILL  
CREEKSIDE CAGES  
A HOP AND A STITCH  
POULIN GRAIN**

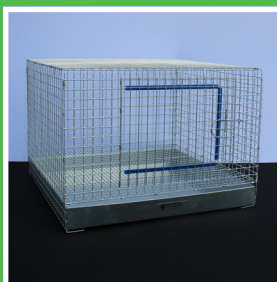
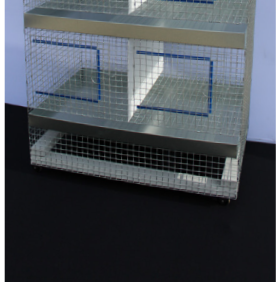
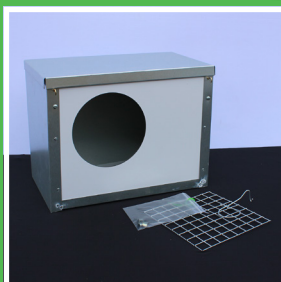
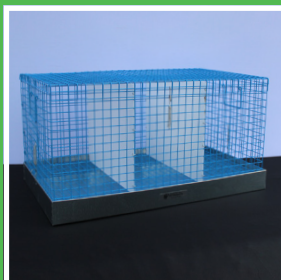
**SEE PAGE 8 FOR THE ONLINE ENTRY PROCEDURE**



# Pointer Hill Pet Products



*Pointer Hill is proud to be the national sales representative of Oxy-Gen*



**f** Pointer Hill Pet Products  
625 Hoffmansville Road  
Bechtelsville, PA 19505



Mon-Fri 7:00am - 4:00pm EST  
Members of ARBA & ACBA



Toll Free: **888.331.2243**

Phone: **610.754.7830**

Fax: **610.754.7840**



Email: **info@pointerhill.com**

Visit us: **www.pointerhill.com**

Shipments Made Daily | AMERICAN EXPRESS | DISCOVER | VISA | MASTERCARD Accepted

# TABLE OF CONTENTS

Show Schedule, Show Officials.....	4
RHD Policy.....	5-6
PaSRBASponsored Show Sanctioned Breeds.....	7
2022 Online Entry Procedure.....	8
Judges.....	9
Awards/Groups.....	10
Specialty Show Summary.....	11
Specialty Shows.....	12-21
Show Rules.....	22-24
Issue Resolution.....	25
PaSRBABusiness Meeting.....	25
Vendors.....	26-28
Banquet.....	29
Arts & Crafts Contest.....	30
Hotels.....	31-33
Restaurants.....	34-35
Youth Activities.....	36-38
Art Sweinhart Memorial Youth Award.....	39
Performance Sports for Rabbits & Cavies.....	40-41
Directions.....	42
PaSRBARaffle/Rabbit Raffle.....	43
2022 Floor Plan.....	44
Local 24 Hour Car Washes.....	44
Cooping.....	45
National Specialty Clubs.....	46-51

## 2022 ARBA National Convention Information October 30 - November 2 Reno, Nevada

## 2022 SHOW SCHEDULE

### Friday

Building open 3-10pm  
Cooping available after 3pm

Rabbit Specialty Shows

Building closes at 6pm

PaSRBA Banquet 7pm

### Saturday

Building opens 6am  
Shows starts at 9am  
Open/Youth Rabbit & Cavy  
Open Cavy Specialty Show

### Sunday

Building opens 6am  
Show starts at 9am  
Open/Youth Rabbit & Cavy  
Rabbit Specialty Shows

## PaSRBA Show Officials

### CONVENTION CHAIR and GENERAL SUPERINTENDENT

Michelle Forry  
Mlganassi@yahoo.com

### YOUTH RABBIT SECRETARY

Bob Kolb  
(Youth Rabbit Assistant)  
Kristina Kolb

### OPEN SUPERINTENDENTS

Matt Bishop  
Ashley Shaw

### CAVY SUPERINTENDENT

Mike Boyle

### YOUTH SUPERINTENDENT

Mark Lucas

### CAVY SECRETARY

Andrew Miles

### WOOL/MINI REX ROOM SUPERINTENDENTS

Dani Berger

### YOUTH PROGRAMS

Sarah Lowell

### SUPERINTENDENT ASSISTANTS

Ryan Geschwindt (youth)  
Andy Stutler (open)

### ARTS & CRAFTS

Carl Gentile  
Donna Gentile

### GENERAL SECRETARY

Tori Perry

### SPECIALTY SHOWS

Ally Rudy

### OPEN RABBIT SECRETARY

Lori Jo Whitehaus  
(Open Rabbit Assistants)  
Deb Schmittel

### RABBIT HOPPING

Sally Turner

**SEE PAGE 8 FOR THE ONLINE ENTRY PROCEDURE**

# RHD Policy

**Coordinator - Brian Bell - [pasrbarhd@gmail.com](mailto:pasrbarhd@gmail.com)**

**<https://www.pasrba.org/pasrba-rhd>**

In 2020 the Pennsylvania Department of Agriculture implemented an interstate rabbit policy to reduce the spread of RHD into the Commonwealth. The order deals with rabbits who live in a state that has a positive case or presumptive case in the past 12 months as defined by the USDA. The rule has been designated to protect the health and viability of the multi-million dollar rabbit industry within the Commonwealth of PA as PA is one of the top rabbit producers in the nation.

Full text of the rule can be found at: <http://www.pacodeandbulletin.gov/Display/pabull?file=/secure/pabulletin/data/vol50/50-39/1311.html&d=reduce>

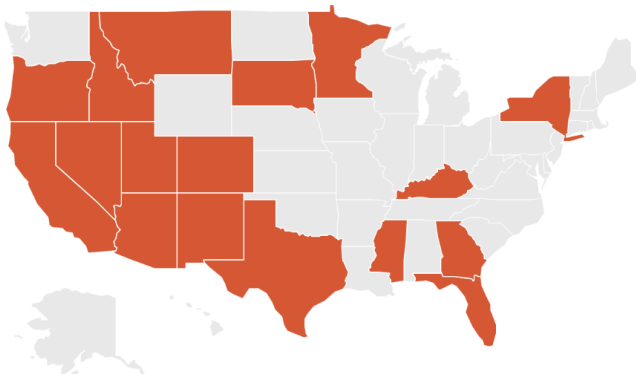
Additionally, the ARBA maintains its own policy regarding RHD which in most cases are less stringent than the Commonwealth of PA. It is recommended that all attendees review the ARBA policy which can be found on the ARBA website ([www.arba.net](http://www.arba.net)) and within the ARBA Official Show rules (Section 15).

It is the responsibility of each attendee of the PaSRBA Convention to follow the Commonwealth of PA and rule and the ARBA policy if they are bringing rabbits, equipment or products into the Commonwealth of Pennsylvania. Please note the rule set forth by the PA Department of Agriculture are strictly enforced by the State Veterinarian and violators are subject to fines of up to \$10,000 per violation.

Here is the list of affected RHD quarantine states per the PA order as of December 16, 2021. This list is subject to change and will be updated on the PaSRBA website ([www.pasrba.org](http://www.pasrba.org)) and PaSRBA Convention Official Facebook page.

Arizona, California, Colorado, Florida, Georgia, Idaho, Montana, Minnesota, Mississippi, Nevada, New Mexico, New York, Oregon, South Dakota, Texas, Utah, and Wyoming.

## States covered under PA Department of AG RHD policy



If your rabbits originate from one of the states that has an RHD exposure or event in the past 12 months the live rabbits must be accompanied by an Interstate Certificate of Veterinary inspection and must be examined by an accredited Veterinarian within the 72 hours prior to the date of shipment to Pennsylvania. The Interstate Certificate of Veterinary Inspection must include the following written statements prepared by the accredited Veterinarian writing the form:

1. "All Rabbits in the shipment have been examined for and found free of infectious, contagious, or communicable diseases."
2. "All Rabbits have originated from a single premises that has no signs of infectious, contagious or communicable disease in rabbits."
3. "There have been no movement of Rabbits onto the premises of origin within the 90 days prior to the date of shipment."
4. "The rabbits in this shipment have had no contact with wild or captive rabbits other than their cohorts in the 90 days prior to shipment."

If shipping rabbits to PA on Friday February 4, 2022, 90 days prior is November 6, 2021.

The rule also has these requirements:

1. No Rabbits or their products, such as meat, pelts, hides, carcasses, or other items and no equipment, exposed feed or conveyances or other items or associated materials may enter the commonwealth of Pennsylvania from a premises exposed to, contaminated with or known to be affected with RHD, or where there is reasonable suspicion, the disease exists or the rabbits have been exposed to or infected with RHD.
2. No Rabbit products such as meat, pelts, hides, carcasses or other items, and no equipment, exposed feed or conveyances or other associated materials may enter the Commonwealth of Pennsylvania from a Commonwealth, State, Territory or Country where RHD has been diagnosed in the prior 12 months or there is reasonable suspicion it exists.

PaSRBA officials will work with attendees from those states to inspect their CVIs before entry into the building as required by the PA Department of Agriculture. What we know as of printing of the catalog is that attendees that have animals from the affected quarantine states will be directed to a single entrance for inspection of the CVI documents and animals entering the premises. We will have details for those attendees closer to convention as we continue to monitor, assess risk and adjust the procedures accordingly for our event. Entry procedures will be posted on the PaSRBA website ([www.pasrba.org](http://www.pasrba.org)) and PaSRBA Convention Official Facebook page.

We will also have some documents at check-in for all attendees to attest to the origin of the rabbits, equipment and products that they have brought onto the Expo grounds. As required by the PA State rule, any attendee that is found violating the rule will be reported to the State Veterinarian for assessment and investigation.

Any questions about this rule should be sent to [pasrbarhd@gmail.com](mailto:pasrbarhd@gmail.com) and we recommend that any attendees that are impacted and plan to attend the PaSRBA Convention get in contact early with our team so we can assist you in being prepared to come to Pennsylvania.

## Entry Information

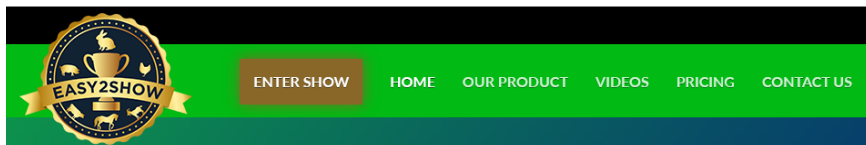
- The show will be PRE-ENTRY only. No day of show entries will be accepted.
- Mail-in entries must be postmarked by Jan. 26 and sent to the respective secretaries
- Easy2Show entries are due by 8 a.m. Feb. 4 for the Feb. 5 show and 12 p.m. Feb. 5 for our Feb. 6 show.
- Email entries will not be accepted.
- Entry fee is \$6 per animal per show. If you enter the same animal in both the Saturday and Sunday show by 8am on Saturday, the reduced entry fee will be \$11 for both days. Fur/wool \$2
- Once an animal is entered, ear number changes only will be accepted for \$3.
- Note: Entries will be firmly closed at the posted deadlines. No late entries will be accepted. No exceptions
- All exhibitors will need to check in with the secretary by 8 a.m. You can check in for both Saturday and Sunday shows at the same time.

## PaSRBA SPONSORED SHOW SANCTIONED BREEDS - 2022

A=Saturday Open, B=Sunday Open, C=Saturday Youth, D=Sunday Youth

American	ABCD	Havana	ABCD
Am.Chinchilla	ABCD	Himalayan	ABCD
Am. Fuzzy Lop	ABCD	Holland Lop	ABCD
American Sable	ABCD	Jersey Wooly	ABCD
Angora - English	ABCD	Lilac	ABCD
Angora - French	ABCD	Lionhead	ABCD
Angora - Giant	ABCD	Lop – English	ABCD
Angora - Satin	ABCD	Lop - French	ABCD
Argente Bruns	ABCD	Mini Rex	ABCD
Belgian Hare	ABCD	Mini Lop	ABCD
Beveren	ABCD	Mini Satins	ABCD
Blanc de Hotot	AB	Netherland Dwarf	ABCD
Britannia Petite	ABCD	New Zealand	ABCD
Californian	ABCD	Palomino	ABCD
Champagne	ABCD	Polish	ABCD
Checkered Giant	AB	Rex	ABCD
Cinnamon	ABCD	Rhinelanders	ABCD
Crème D'Argent	ABCD	Satin	ABCD
Dutch	ABCD	Silver	ABCD
Dwarf Hotot	ABCD	Silver Fox	ABCD
Dwarf Papillion	ABCD	Silver Marten	ABCD
English Spot	ABCD	Standard Chinchilla	ABCD
Flemish Giant	ABCD	Tan	ABCD
Florida White	ABCD	Thriantas	ABCD
Giant Chin	ABCD	Cavies	ABCD
Harlequin	ABCD	Meat Pen	AC

# 2022 Online Entry Procedure



PaSRBA is excited to offer Easy2Show program for our exhibitors.

Deadlines:

Saturday Feb 5 show deadline 8 a.m. Feb. 4

Sunday Feb. 6 show deadline 12 p.m. Feb. 5

To use the system create an account with  
[www.Easy2show.com](http://www.Easy2show.com).

You can make one account per family. This account can be used for any show using Easy2Show. Here is a video to help with the entry process.

For more information including an information video on how to make an account visit  
<https://www.pasrba.org/pasrba-entry-portal>

If a person enters the show and then ARBA adds a new RHD zone due in their area entry fees will be refunded minus any administrative fees. Refunds will not be offered for any other reason.

---

**OFFICIAL ARBA SANCTIONED  
OPEN AND YOUTH SHOW  
ERIC STEWART, EXECUTIVE DIRECTOR  
PO Box 400  
Knox, PA 16232  
E-mail: [info@arba.net](mailto:info@arba.net)**



# 2022 PaSRBA Judges

\*\*\*PaSRBA reserves the right to add, change or delete judges or judging assignments as deemed necessary.\*\*\*\*

Chase Austin	TX	Joey Martin	OH
Nicole Bortz	PA	Rachel Penterman	WI
William H Bramble Jr	NJ	Misty Polasik	CA
Wade Burkhalter	NJ	Hannah Reynard	OH
Sandy Carpenter	NY	Cole Rupprecht	MN
G. Joseph Colucci	OH	Michelle Shea	ID
Stacy Easton-Martin	OH	Steve Shea	ID
Ryan Harrah	IN	Bryan Shirk	MI
Johnny Haussener	PA	Mary Ellen Stamets	NJ
Danny Long	OH	Eric Stewart	PA
George Long	PA	Ashley Sweeney	OH
Melissa Magee	CA	Gordon Williams	IN
Michael Mageles	ME	Kyle Yacobucci	NY
Joel Marshall	IN		

## Pennsylvania State Rabbit Breeders Association Secretary - Sue Werner

897 N Lancaster St.  
Jonestown, PA 17038

## Membership - Kathy Shea

2511 Paxtonville Rd.  
Middleburg, PA 17842

Ind. \$10.00 H/W \$13.00 Fam. \$15.00 (1 yr)

Ind. \$27.00 H/W \$35.00 Fam. \$40 (3 yr)

## PaSRBA Sanction - Paula Kelly

<https://www.pasrba.org/online-store> Click on sanction

Sanction Fee: \$10.00 per show Open & Youth

## Emergency Contact Information

\*\*Friday February 4, 2022 through Sunday February 6, 2022\*\*

**Weather updates will be available on  
the PaSRBA Facebook page**

Emergency Cell Phone – 908-872-7772

# Awards

(PaSRBA open & youth sponsored shows)

BIS Rabbit/Cavy Special Award

Best of Group Rabbit Special Award

RIS Cavy Special Award

BOB/sanctioned Special Award

BOS/sanctioned Special Award

BOB/non-sanctioned Rosette

Placement Ribbons 5 places

**Any award required by a Specialty Club and not listed will be paid the cash amount.**

---

## Group 1

Mini Rex

Dutch

New Zealand

Flemish Giant

English Spot

Britianna Petite

Standard Chinchilla

Thrianta

American

Rhinelanders

Crème D'Argent

American Sable

Argente Brun

## Group 3

Holland Lop

Mini Satin

Jersey Woolly

French Lop

American Fuzzy Lop

Himalayan

Lionhead

Silver Fox

Palomino

English Angora

Lilac

Giant Chinchilla

## Group 2

Netherland Dwarf

Satin

Polish

Californian

Tan

Champagne D'Argent

Silver Marten

Cinnamon

Beveren

Checkered Giant

American Chinchilla

Blanc de Hotot

Dwarf Papillon

## Group 4

Mini Lop

Rex

Havana

English Lop

Florida White

Dwarf Hotot

Belgian Hare

French Angora

Harlequin

Silver

Satin Angora

Giant Angora

## 2022 Specialty Show Summary

The following breeds will have specialty shows over the weekend. Check the following pages for information pertaining to the sponsoring club and details about their show. All Specialty Shows are PaSRBA Sanctioned.

### Specialty Shows Table of Contents

American .....	20	Holland Lop .....	20
Am. Fuzzy Lop .....	12	Jersey Woolly .....	15
American Sable .....	11	Lionhead .....	12
Angora - English .....	13	Lop – English .....	12, 18
Angora - French .....	13	Lop - French .....	12, 18
Angora - Giant .....	13	Mini Rex .....	15
Angora - Satin .....	13	Mini Lop .....	16
Argente Bruns .....	12	Mini Satins .....	19
Belgian Hare .....	12	Netherland Dwarf .....	18
Beveren .....	12	New Zealand .....	12
Blanc de Hotot .....	17	Palomino .....	12
Britannia Petite .....	12	Polish .....	14
Californian .....	12	Rex .....	17
Champagne .....	12	Rhinelanders .....	18
Checkered Giant .....	12	Satin .....	19
Dutch .....	16	Silver Fox .....	12
Dwarf Hotot .....	14	Silver Marten .....	12
English Spot .....	12, 19	Standard Chinchilla .....	12
Flemish Giant .....	21	Tan .....	16
Florida White .....	21	Thriantas .....	12
Harlequin .....	17	Velveteen Lop .....	19
Havana .....	15	Cavies .....	13
Himalayan .....	13		

**Keep up to date with any changes and corrections at <http://www.pasrba.org/>**

# **Mid Atlantic Rabbit and Cavy Shows (MARCS) Sponsored Specialty Shows**

---

**Secretary: Dana Bramble**  
**marcsshows@gmail.com**

Pre-Entry\* fee: \$5.00 per animal / \$2.00 per fur  
All Pre-Entry through the online Easy2Show program  
more info on page 8 of the catalog  
Deadline February 1, 2022 at 9PM

## **No Day of Show**

---

American Fuzzy Lop	Open	Saturday & Sunday
Argente Brun	Open	Saturday & Sunday
Belgian Hare	Open	Saturday & Sunday
Beveren	Open	Saturday
Britannia Petite	Open	Saturday & Sunday
Californian	Open & Youth	Saturday & Sunday
Champagne d'Argent	Open	Saturday & Sunday
Checkered Giant	Open	Saturday & Sunday
English Spot	Open	Sunday
Lionhead	Open	Saturday & Sunday
Lop (English/French)	Open	Sunday
New Zealand	Open & Youth	Saturday & Sunday
Palomino	Open	Saturday & Sunday
Silver Fox	Open	Saturday & Sunday
Silver Marten	Open	Saturday & Sunday
Standard Chinchilla	Open	Saturday & Sunday
Thrianta	Open	Saturday & Sunday

# Specialty Show Information

## Mid-Atlantic Cavy Breeders Association

### Saturday & Sunday (OPEN & YOUTH)

Entries: Mail-In, Email

Entry Fees: Mail-In: \$5.00/entry by 1/29/2022  
Email: \$5.00/entry by 9pm 2/2/2022

#### Show Secretary

Denise McDougall  
7528 Bingham Street  
Philadelphia, PA 19111  
(267)997-0755 • celticdee@msn.com

## United Angora Rabbit Club

### Saturday (OPEN)

Entries: Mail-in, E-mail

Entry Fees: Mail-In- \$5.00/Entry 1/22/2022  
E-mail: \$5.00/entry wool-\$2.00 1/31/2022

#### Show Secretary

Emily Ashton  
AshtonHomestead@gmail.com

Entry fees must be paid via PayPal for both pre-entry and Day of Show  
to: uarctreasurer@gmail.com

**\*\*The UARC will also be hosting a  
W/S/G competition in the vendor hall!**

## Mid-Atlantic Himalayan Rabbit Club

### Saturday & Sunday (OPEN ONLY)

Entries: Mail-in, Email

Entry Fees: Mail-in: \$6.00/entry 1/26/2022  
Email: \$6.00/entry 2/2/2022

#### Show Secretary

JoAnna Perez  
30 Eaton Circle  
Clementon, NJ 08021  
(201) 233-0998 • ivygarson@yahoo.com

## Specialty Show Information

## Mid Atlantic Polish Club

**Saturday (OPEN & YOUTH)**

Entries: Mail-in, Email, Day of Show (Only Pre-Entered Exhibitors can add Day of Show Entries)

Entry Fees:	Mail-In: \$4.00/entry for Members, \$5.00/entry for nonmembers 1/26/2022
	Email: \$4.00/entry for Members \$5.00/entry for nonmembers 2/2/2022
	Day of Show: \$6.00/entry

Show Secretary

Brandy Burroughs-Dunn  
4811 Goose Creek Dr.  
Salisbury, MD 21804

bundlesofbunniesrabbitry@yahoo.com • (302) 381-7320

**Eastern States Polish Rabbit Club**

**Sunday (OPEN & YOUTH)**

Entry Fees: Mail-in: \$5.00/entry 1/28/2022

Entry Fees: Mail-In: \$5.00/entry 1/20/2022  
Email: \$5.00/entry 2/3/2022

Show Secretary

Howard Dunn  
50 S. Childs Road

30 S. Childs Road  
Kearneysville, WV 25430

Rabbitman189@aol.com • (304) 820-9901

PAYPAL entry fees:	
--------------------	--

easternstatespolishrabbitclub@gmail.com

## Mid-Atlantic Dwarf Hotot Club

## Mid-Atlantic Dwarf Hotot Club

**Saturday & Sunday (OPEN & YOUTH)**

Entries: Mail-In, E-mail, Day of show (Only Pre-Entered Exhibitors can add Day of Show Entries)

Entry Fees:	Mail-in: \$6.00/entry 1/29/2022
	E-mail: \$6.00/entry 2/2/2022
	Day of Show: \$7.00/entry

Show Secretary

Sally Turner  
201 Port Lane

Philipsburg, PA 16866  
 rabbit\_ranchers@yahoo.com • (814) 342-2474

rabbi\_anchors@yahoo.com • (814) 342-2474

14 PaSRBA Catalog 2022

# Specialty Show Information

## Majestic Mini Rex Specialty Club

### Saturday & Sunday (OPEN & YOUTH)

Entries: Mail-In, Email, Day of show (Only Pre-Entered Exhibitors can add Day of Show Entries)

Entry Fees:      Mail-in: \$4.50/entry \$1.50/Fur for MMRSC Members  
   \$5.00/entry \$2/Fur for Non- Member 1/28/2022  
   Email - \$4.50/entry \$1.50/Fur for MMRSC Members  
   \$5.00/entry \$2/Fur for Non- Member 2/2/2022  
   Day of Show: \$6.00/entry \$3/Fur

\*Please note that email entries MUST be submitted by 9:00 pm on 1/28/2022. In order to apply for the membership discount, you must be a member as of 1/22/2022

### Show Secretary

Danielle Barbacow  
3058 Wentling Schoolhouse Road  
East Greenville, PA 18041  
majesticsecretary@gmail.com

## North East Jersey Wooly Breeders

### Saturday and Sunday (OPEN & YOUTH)

Entries: Mail-in, Email

Entry Fees:      Mail-in: \$5/entry 1/29/2022  
   Email: \$5/entry 2/1/2022  
   \*Wool \$2/entry and Ear Changes \$1/entry

### Show Secretary

Michelle Landis  
305 ½ N. 3rd Street  
Perkasie, PA 18944  
(215) 896-9042 • roughnecksm@verizon.net

## East Coast Havana Organization (ECHO)

### Saturday & Sunday (OPEN ONLY)

Entries: Mail-In, Email

Entry Fees:      Mail-In: \$5.50/entry by 1/26/2022  
   Email: \$5.50/entry by 1/29/2022

### Show Secretary

Tricia Miller  
11 Pin Oak Trail  
Medford, NJ 08055  
Triciamiller65@icloud.com • (856)298-3157

# Specialty Show Information

## Mid Atlantic Mini Lop Club

### Saturday & Sunday (OPEN & YOUTH)

Entries: Mail-In, Phone, Email, Day of show (Only Pre-Entered Exhibitors can add Day of Show Entries)

Entry Fees:      Mail-in: \$4.00/entry for Members  
   \$5.00/entry for non-members 1/26/2022  
   Phone: \$4.00/entry for Members  
   \$5.00/entry for nonmembers 1/26/2022  
   Email - \$4.00/entry for Members  
   \$5.00/entry for nonmembers 2/2/2022  
   Day of Show: \$6.00/entry

### Show Secretary

Brandy Burroughs-Dunn

4811 Goose Creek Dr.

Salisbury, MD 21804

bundlesofbunniesrabbitry@yahoo.com • (302) 381-7320

## Mid-Atlantic Tan Club

### Saturday & Sunday (OPEN ONLY)

Entries: EZ2SHOW Online Entries

Entry Fees:      Online: \$6.00/ entry by  
   8AM Day of Show Saturday/Sunday

### Show Secretary

Abigail Bell

kids.sbfarms@gmail.com • (908) 872-7772

## Chesapeake Regional Dutch Breeders Association

### Saturday & Sunday (OPEN & YOUTH)

Entries: Email & Day of show

Entry Fees:      Email: \$5/rabbit 2/2/22 by 6pm  
   Day of Show: \$5.00/entry

\*Open and Youth entries will be accepted at club booth in the youth hall

### Show Secretary

Julie Brown

16farleystreet@gmail.com

(203)625-0260



# Specialty Show Information

## Mason-Dixon Rex RBA

### Saturday & Sunday (OPEN ONLY)

Entries: Mail-In, Email

Entry Fee:            Mail-In: \$6.00/entry by 1/28/2022  
                             E-mail - \$6.00/entry by 1/28/2022

\* For MDRRBA Members that enter 12 or more rabbits, pre entry fee is reduced to \$5.00/entry

### Show Secretary

Paula Kelly  
1960 Route 259  
Bolivar, PA 15923  
ridgerunnerrex@gmail.com • (724) 238-4784

## Eastern Harlequin Rabbit Club

### Saturday & Sunday (OPEN ONLY)

Entries: E-mail, Day of Show

Entry Fees:        Email: \$5/entry for members  
                             \$7/entry for non- members 2/1/2022  
                             Day of Show: \$7/entry for members  
                             \$9/entry for non-members

### Show Secretary

Sarah Freund  
harliehatching@aol.com  
(410)603-5697

\*ALL entry fees will be paid via the club's PayPal at  
EHRC2018@gmail.com as "Friends & Family" option

## Hotot Rabbit Breeders International (Blanc De Hotot)

### Saturday & Sunday (OPEN ONLY)

Entries: Mail-In, Email

Entry Fees:        Mail-In: \$5.00/entry by 2/1/2021  
                             E-Mail: \$5.00/entry by 2/3/2021

### Show Secretary

Michael Brackett  
PO Box 164  
Carver, MA 02330  
Mmbunz12@gmail.com • (774)454-4425

# Specialty Show Information

## Color Me Dwarf Club

### Saturday (OPEN & YOUTH)

Entries: Mail-in, Email & Day of Show

Entry Fees: Mail-in: \$4/entry postmarked by 1/28/2022

Email \$4/entry by 2/2/2022

Day of Show \$6.00/entry

#### Show Secretary

Christina Ross

6510 Conesus Springwater Road

Conesus, NY 14435

(585) 329-9887 • rosstans@yahoo.com

## District 2 Netherland Dwarf Rabbit Club

### Sunday Only (OPEN & YOUTH)

Entries: Email, Day of Show

Entry Fees: Email: \$5.00/entry by 2/2/22

Day of Show \$6.00/entry

#### Show Secretary

Kyla Fitzpatrick Butts

9807 McMillan Ave

Silver Spring, MD 20910

(301) 613-3245 • Lilfitzy3@aol.com

## Mid Atlantic Lop Club English & French Lops

### Saturday Only (OPEN)

Entries: Mail-in, Email

Entry Fees: Mail-in: \$6/entry 1/28/2022

Email: \$6/entry 2/3/2022

#### Show Secretary

Howard Dunn

50 S. Childs Road

Kearneysville, WV 25430

Rabbitman189@aol.com • (304) 820-9901

PAYPAL entry fees:

Midatlanticlopclub@gmail.com

# Specialty Show Information

## Mid-Atlantic Satin/Mini Satin Rabbit Club

### Saturday & Sunday (OPEN & YOUTH)

Entries: Mail-in, Email

Entry Fees: Mail-In: \$4.00/entry postmarked by 1/22/22

Email: \$5.00/entry by 2/2/22

### Show Secretary

Kristina Kolb

34 N Zinns Mill Road

Lebanon, PA 17042

kristinamkolb@comcast.net • (717)222-1822

## National Velveteen Lop Club

### Saturday & Sunday (OPEN ONLY)

Entries: Email

Entry Fees: Email: \$5.00/entry 2/2/2022

### Show Secretary

Sam Truckly

(440)567-0280

sammsdream@aol.com

## Atlantic English Spot Club

### Saturday Only (OPEN ONLY)

Entries: Mail-in, E-mail, Day of Show

Entry Fee: Mail-in \$6.00/entry for members

Must be post marked by 1/26/2022

E-mail \$6.00/entry for members by 1/29/22

Day of Show - \$8.00/entry

### Show Secretary

Debra Denisuk

19709 Old York Road

White Hall, MD 21161

(410) 218-0781 • ddenisuk@gmail.com

# Specialty Show Information

## Eastern Holland Lop Specialty Club

### Saturday (OPEN & YOUTH)

Entries: Mail-in, Email

Entry Fees: Mail in: \$4.00/ rabbit 1/29/2022  
Email: \$4.00/rabbit 2/1/2022

### Show Secretary

Francine Waters  
711 Bryants Nursery Road  
Silver Spring, MD 20905  
(202) 329-3033 • Towerfew1@verizon.net

## Chesapeake Holland Lop Club

### Sunday (OPEN & YOUTH)

Entries: Mail-in, Email

Entry Fees: Mail in: \$4.00/ rabbit 1/29/2022  
Email: \$4.00/rabbit 2/3/2022 by Midnight

### Show Secretary

Donna Richards  
1808 E Deep Run Road  
Manchester, MD 21102  
(443) 789-1166 • donnajrichards@hotmail.com

## Eastern States American Specialty Club

### Sunday (OPEN)

Entries: Email

Entry Fee: Email: \$5.00/entry by 2/1/22

### Show Secretary

Ellen Anderson  
Kashea01@gmail.com

# Specialty Show Information

## Eastern States Flemish Giant RBA

### Saturday (OPEN ONLY)

Entries: Mail-in, E-Mail

Entry Fees: Mail-in: \$7.00/entry by 1/24/2022  
E-mail: \$7.00/entry by 1/31/2022

### Show Secretary

Isabella DeSilva  
544 Beverly Hills Dr. CBU 84  
East Wakefield, NH 03830  
easternstatesfgrb@gmail.com • (508)768-5616

## West Branch Rabbit Breeders (Flemish Giant)

### Sunday (OPEN ONLY)

Entries: Mail-in, E-mail

Entry Fees: Mail-in: \$5.00/entry by 1/27/2022  
E-mail: \$5.00/entry by 1/27/2022

### Show Secretary

Wayne Bechdel  
117 Hollow Road  
Lock Haven, PA 17745  
waynebechdel@gmail.com • (570)660-3946

## Erie Regional Florida White Club

### Saturday & Sunday (OPEN ONLY)

Entries: Mail-In, Email

Entry Fees: Mail-In: \$4.50/entry by 1/28/2022  
Email: \$4.50/entry by 2/2/2022

### Show Secretary

Ashley Sweeney  
970 Weymouth Road  
Medina, OH 44256  
Agarza89@hotmail.com • (559)479-1304

# RULES

## RHD Rules:

1. Exhibitors must follow all current ARBA RHD guidelines.
2. Exhibitors must follow all current USDA and Pennsylvania Department of AG RHD guidelines and PaSRBA guidelines and procedures required by the Pennsylvania State Vet.  
Rabbits from the current list of states that had an outbreak or suspected case of RHD as defined by the USDA in the past 12 months must have their CVIs verified before entering the showroom. CVIs are required by the state vet for animals from these states: Arizona, California, Colorado, Florida, Georgia, Idaho, Kentucky, Montana, Minnesota, Mississippi, Nevada, New Mexico, New York, Oregon, South Dakota, Texas, Utah, and Wyoming. This list will be updated if needed at <https://www.pasrba.org/pasrba-rhd>
3. Failure to not follow ARBA, USDA, PA Department of Ag or PaSRBA RHD guidelines will result in entry fees forfeited, removal from the showroom and a report made to the PA State Vet as required by the Pennsylvania Department of AG.

## General

1. This show will conform to all ARBA show rules.
2. There will be no alcoholic beverages allowed at the show grounds.
3. Parents, you are responsible for your Children and any damage they may cause!
4. No breeding of animals in the showroom.
5. Exhibitors will be responsible for any damages they cause to the show facilities.
6. Tape may not be used on any painted surfaces without the permission of the show committee. This is to comply with facility rules. Those who use improper tape are responsible for damages.
7. Animals for sale either must be entered in the show or remain outside the show hall. Any animal not entered in the show shall remain outside of the show room. **Having a non-entered rabbit in the showroom is grounds for removal from the hall and entry fees will be forfeited.**
8. Grooming of animals only in designated areas provided and approved by the show committee.
9. Chairs and grooming tables in designated areas only and only as space permits.
10. There will be a PaSRBA raffle table.
11. There will be a cafeteria for breakfast and lunch.
12. A registrar will be available all weekend to register your rabbits/cavies.
13. All animals must be unloaded in areas indicated on the SHOW HALL DIAGRAM.
14. All attendees are required to comply with facility rules, PaSRBA show rules, PaSRBA Issue Resolution Policy, ARBA show rules, and

local laws and regulations. All decisions and interpretations of the show committee are final and binding and are made in the best interest of the attendees and overall event. Show officials will be treated with respect both at the show and on social media

15. Any exhibitor, spectator or vendor failing to comply with the show rules either at the show or on social media channels will be asked to leave.

16. If a person enters the show and then ARBA a new RHD zone due in their area entry fees will be refunded minus any administrative fees. Refunds will not be offered for any other reason.

## **Show**

1. All stock must be in the show room by 8 am.

2. Carriers must have a leak proof bottom.

3. Youth rabbits are located in North Hall, Open rabbits are located in the Show Barn. Exception: Open and youth Angoras, Jersey Woolies, Lionheads and Fuzzy Lops AND OPEN Mini Rex are located in the Show Arena. Open Flemish Giants are located in North Hall. All cavies will be in the East Hall (no rabbits permitted). This is subject to change by the superintendents.

4. Show room opens at 3pm Friday and 6am Saturday/Sunday.

5. Judging will begin promptly at 9:00 AM on Saturday and Sunday.

6. Showroom will close promptly at 10pm Friday and 6pm on Saturday. Please plan accordingly.

7. Exhibitors of a breed are responsible for finding a writer for their breed. If writers are not found we will go on to the next breed.

8. PaSRBA may change showing order and judges at any time during the show.

9. Saturday's Open & Youth Show are double PaSRBA Points.

10. PaSRBA reserves the right to make changes to the show at any time as deemed necessary by the Show Superintendent or Show Committee.

## **Entries**

1. Youth may NOT enter the same rabbit in Open and Youth PaSRBA Shows

2. Make checks payable to PaSRBA.

3. Post-dated checks will not be accepted.

4. Returned checks will be processed and resubmitted by PaSRBA's bank resubmission services at the expense of the exhibitor (bank will automatically charge the exhibitor's account the state regulated NSF collections fees for each attempted re-submission). PaSRBA will also charge a \$50 administrative fee to the exhibitor. The exhibitor has 10 days upon notice to make good on the bad check and associated fees (only certified bank check or money order will be accepted). If the exhibitor fails to make good within 10 days including associated fees, the exhibitor will be removed from all show reports and eliminated from the show (cannot be reversed once removed). An additional monthly charge of \$5 will be

assessed until the exhibitor has fully resolved the issue. Unresolved issues will be prosecuted.

5. To borrow a pen from the PaSRBA show secretaries you must give up your left shoe until the pen is returned.

## **Animals**

1. All animals must have permanent and legible ear marks according to ARBA rules. Animals not properly earmarked will be eliminated with no entry fees refunded.

2. Any animals showing signs of disease will be removed from the showroom and entry fee(s) forfeited.

3. Exhibitors are responsible for removing animals disqualified for contagious health reasons from the show room.

## **Vendors**

1. A vendor is considered anyone selling merchandise on the show grounds. No vendors are permitted without written permission of PaSRBA. All vendors must purchase a vendor booth. This also includes used items and fundraising.

2. Vendors must request a booth(s) in advance and no booth(s) will be reserved without payment in full. The vendor request form address the official refund policy and will be enforced.

3. Vendors are assigned a booth location(s) at the discretion of the show committee. Locations are final and must be complied with. Vendors may not relocate their booth location(s) without the permission of the show committee.

4. A vendor may provide the committee with special requests and while the committee will do what it can to accommodate these requests, there is no guarantees.

5. Tape may not be used on any painted surfaces without the permission of the show committee. This is to comply with facility rules. Those who use improper tape are responsible for damages.

6. Vendor advertisements must remain in the confinement of their paid vendor booth space

\*\*\*\*\*

The Club, Committee, Staff, and Superintendents caution all persons entering the show site and show grounds against all hazards which may exist, including, but not limited to: Condition of the site/grounds, parking/loading/unloading areas, entrances, floors, stairways, floor coverings, walkways, tenting/canopies, electrical appliances, cords and fittings, caging, and the presence of animals. All persons should take into consideration this event involves animals and to dress, act and exercise caution appropriate for the activity involved. All persons entering the show, the grounds, site, and show areas for whatever purpose do so entirely at their own risk. By virtue of entering the show, the entrant has indicated their acceptance of the show rules listed in the official show catalog, assume all risks involved, and agree to abide by any determination/rulings made by the show committee.



## 2022 PaSRBA Convention Issue Resolution / Escalation Procedure

These issue resolution/escalation procedures must be followed to effectively address and resolve issues or concerns for any PaSRBA sanctioned show. For shows sanctioned by a specialty club, contact the individual listed in the show catalog.

In the showroom	
Paperwork related (entries/cards/control sheets)	Show related
1. Contact the Writer at the show table if judging has commenced (ask to pause judging if escalation is necessary to resolve)	1. Contact the Showroom Superintendent
2. Contact the Show Secretary appropriate for the show	2. Contact the General Superintendent
3. Contact the Showroom Superintendent	
4. Contact the General Superintendent	

Before or after the show	
Paperwork related (entries/reports)	Show related
1. Contact the Show Secretary appropriate for the show	1. Contact the General Superintendent
2. Contact the General Superintendent	

## PaSRBA Business Meeting

- The meeting will be held on Sunday morning at 7:30 at the Lebanon Expo Center in West Hall.

A light breakfast for PaSRBA Members attending the meeting will be provided.

# **VENDORS**

## **A Hop and a Stitch, LLC**

**Custom Embroidery, Sublimation, and now  
Premium Heat Transfers aka White Toner Printing!**

Monica Gray  
Blackwood, NJ

**856-237-3965**

**www.ahopandastitch.com**  
**monica@ahopandastitch.com**

## **Your Chocolate Guys**

**Gourmet Fudge and Chocolates**

Fleetwood, PA

**www.yourchocolateguys.com**  
**info@yourchocolateguys.com**

## **Almosta Ranch Alpacas and Fiber Farm**

**Garments and Accessories Made from Wool of  
Alpacas, Llamas, Angora Rabbits, and Finn Sheep**

Mohrsville, PA

**www.almostaranchalpacas.com**  
**Almostaranch\_96@comcast.net**

## **Adventure Bunny Rabbit**

**Hopping and Agility**

**Our business is hopping!**

Lebanon, PA

**www.rabbithopping.com**  
**info@rabbithopping.com**

## **Creekside Cages**

**Cages and small animal supplies**

Greensburg, PA

**Creeksidecages2022@gmail.com**

# VENDORS

## **Country Girl Jewelry by Karen**

**Your go to for rabbit and cavy jewelry!  
OVER 300 different charmed jewelry designs!**

**Karen Callahan**

**410-310-8934**

**countrygirljewelrybykaren@gmail.com**

## **Victory Pass Originals**

**Robyn Estrella**

**27 English Rd.**

**Endicott, NY 13760**

**www.victorypassoriginals.com**

**Estrellarobyn12@gmail.com**

## **Gray's Cages**

**Rabbit Cages, Carriers, and Supplies**

**Vicksburg, MI**

**www.grayscages.com**

**chris@grayscages.com**

## **KW Cages**

**Equipment Dealer**

**Louisville, OH**

**www.kwcages.com**

**dansaunier@yahoo.com**

## **Poulin Grain**

**Newport, VT**

**www.poulingrain.com**

**email info@poulingrain.com**

# VENDORS

## **Pointer Hill Pet Products**

**Rabbit and Cavy Supplies**

Bechtelsville, PA

**[www.pointerhill.com](http://www.pointerhill.com)**

**[info@pointerhill.com](mailto:info@pointerhill.com)**

## **TRH Hopping**

**Rabbit Hopping Equipment, Pet Portraits,  
Animal Art, and Landscapes**

Philipsburg, PA

**[www.sydneybturnerart.com](http://www.sydneybturnerart.com)**

**[sydneybturnerart@gmail.com](mailto:sydneybturnerart@gmail.com)**

## **MARCS**

**2023 ARBA Convention Co-Hosts**

601 Division St.

Berlin, Pa

**[Mlganassi@yahoo.com](mailto:Mlganassi@yahoo.com)**

**[www.marcshows.com](http://www.marcshows.com)**

## **Woodden**

**Premium Grooming Tables and Lasered Wood**

Atwater, OH

**[www.wooddenllc.com](http://www.wooddenllc.com)**

**[wood.den.llc@gmail.com](mailto:wood.den.llc@gmail.com)**



***MENU:***

*Tossed Salad*  
*Sliced, seasoned roast beef/  
 bread filling*  
*Mashed Potatoes*  
*Corn*  
*Roll/butter*  
*Dessert*

**\*\$25 for 11 & up**  
**\*\$20 for age 3 to 10**  
**\*\$10 Social only**

Following Meal:  
 Awards ceremony  
 & Youth Social Hour

**\*\*Please order your  
 tickets in PaSRBA  
 online store  
[www.pasrba.org](http://www.pasrba.org)  
 by 1/27/22\*\***

Contact Michele or MolliLyn Petro with any  
 Questions: 570-436-7836  
[mpetro@scasd.us](mailto:mpetro@scasd.us)

**We can't wait  
 to see you!!**

# PaSRBA Open/Youth Arts & Crafts

**Saturday, February 5, 2022**

Drop off items -9:00 AM – 11:00 AM

Put your name on the back of every item.

Judging at 12:00 PM pick up at 2:00 PM

Open Entry Fee - \$1.00 per item / Youth Free Entry

No limits on class entries. Open is age 18 and over.

Awards: Ribbons - First – Third, Best in Show award

***All entries must relate to a rabbit or cavy***

-----  
**Event Chairs: Carl and Donna Gentile**

**Day of Show Entry**

**Classes:**

Art – Drawing, Painting, in any medium

Craft – Jewelry, Ceramics, Pottery, Sculpture. Carving, any other

Sewing- Clothing, Needlework, Latch Hook, stuffed rabbit or cavy, any other

Photography – Color, Black & White

Wood/Metal- nest box, rabbit equipment

Edible – cup cakes, cookies, cakes etc. Shaped or decorated in rabbit or cavy form ( judged on appearance and taste)

Stories (Youth Only) - Involving Rabbits and Cavies

Project Books (Youth Only)

**Submissions may not include rabbit products such as wool or pelts from a state that has had a case of RHD in the past 12 months.**

-----  
Name \_\_\_\_\_

Phone \_\_\_\_\_

Address \_\_\_\_\_

Email \_\_\_\_\_

Class	Description
Art	Water Color - rabbit in field of daisies

# HOST HOTELS

## Hampton Inn Lebanon



\$119 + tax  
Mention "PaSRBA Rabbit Show"  
Free Hot Breakfast  
100% Smoke Free  
Indoor Pool

1601 East Cumberland St.  
Lebanon, PA 17042  
717-277-7221

---

## Fairfield Inn & Suites Lebanon Near Expo Center



Across the street from  
the Expo Center

\$149 + tax until 1/5/22  
Mention "PaSRBA  
Rabbit Show"

Fitness center • Free breakfast • High-speed internet  
• Parking • Pool

100 Springwood Drive Lebanon,  
Pennsylvania 17042  
1 717-273-3969

Due to issues from previous years PaSRBA does not  
recommend the Hammock, 625 Quentin Rd

# HOTELS

## **Holiday Inn Express**



\$110 + tax per night standard rooms.

Pet fee of \$25+tax per night

Continental Breakfast

Mention PaSRBA Rabbit Show

**2205 E. Cumberland St  
Lebanon, PA 17042  
717-273-9800**

---

## **Days Inn**

**3 Everest Lane  
Jonestown, PA 17038  
717-865-4064**

## **Comfort Suites Manheim**

**2845 Lebanon Rd,  
Manheim, PA 17545  
(717) 665-3118**

## **Lancaster Inn & Suites**

**1475 Lancaster Road,  
Manheim PA 17545  
717-665-5440**

## **Holiday Inn Express**

**2205 E. Cumberland St  
Lebanon, PA 17042  
717-273-9800**



# HOTELS

## **Courtyard Marriott Hershey**

515 East Chocolate Avenue  
Hershey, PA 17033  
717-533-1750

## **Americas Best Value Inn**

2951 Horseshoe Pike  
Palmyra, PA, 17078  
717-838-4761

## **Fairfield Inn and Suites**

4 Fisher Ave.  
Jonestown, PA 17038  
717-865-4234

## **Comfort Inn Jonestown**

16 Marsanna Ln.  
17038 Jonestown  
717-865-8080

## **Hampton Inn & Suites Hershey**

749 E. Chocolate Avenue,  
Hershey, PA, 17033  
717-533-8400

# Restaurants

**Blue Bird Inn** - (717)-273-3000  
2387 Cornwall Rd, Lebanon, PA 17042

**Quentin Tavern** - (717)-272-4700  
81 W Main St, Quentin, PA 17083

**Gin Mill** - (717) 273-2729  
324 E Cumberland St, Lebanon, PA 17042

**Ruby Tuesdays** - (717)274-2081  
1351 Quentin Rd, Lebanon, PA 17042

**Golden Corral** - (717)274-1470  
1147 Quentin Rd, Lebanon, PA 17042

**Friendly's** - (717) 274-9540  
1701 Quentin Rd, Lebanon, PA 17042

**McDonald's Lebanon** - (717) 306-6565  
1725 Quentin Rd, Lebanon, PA 17042

**A & M Pizzeria & Italian Restaurant** - (717) 273- 9330  
626 Quentin Rd, Lebanon, PA 17042

**Kountry Kitchen** - (717) 665-2986  
944 Lebanon Rd, Manheim, PA 17545

**Quentin Haus** - (717) 272-6475  
Rte 72 & Rte 419, Quentin, PA 17083

**Cheers Bar** - (717)665-7714  
3068 Lebanon Rd, Manheim, PA 17545

**Subway** - (717) 274-5510  
812 Quentin Rd, Lebanon, PA 17042

**Sheetz:** Open 24 hours.  
195 Rocherty Rd, Lebanon, PA 17042

# Restaurants

**Five Guys Burgers & Fries** - (717)450-5941  
201 Rocherty Rd, Lebanon, PA 17042

**Little Caesars Pizza** - (717) 277-7111  
720 Quentin Rd, Lebanon, PA 17042

**Magic Wok** - (717) 272-0888  
720 Quentin Rd, Lebanon, PA 17042

**KUGO Japanese Steak House Hibachi & Sushi Bar**  
(717) 376-1888  
1723 Quentin Rd, Lebanon, PA 17042

**South China Buffet** - (717) 272-2323  
1800 Quentin Rd, Lebanon, PA 17042

**CC's Pizza** - (717) 228-2355 or 228-2356  
75 W Main St #4, Lebanon, PA 17042

**Rino's Pizza** - (717) 665-0606  
1711 Lebanon Rd, Manheim, PA 17545

**LongHorn Steakhouse** - (717) 279-8370  
2125 Cumberland St, Lebanon, PA 17042

**Infinito's Pizza Buffet** - (717) 270-6161  
1725 Quentin Rd, Lebanon, PA 17042

**Hoss's Steak & Sea House** - (717) 867-4077  
1235 E Main St, Annville, PA 17003

**Shady Maple Smorgasbord** - (717) 354-8222  
129 Toddy Dr, East Earl, PA 17519

**Mick's All American Pub** - (717) 644-9990  
105 Springwood Dr. Lebanon, PA 17042

## Youth Activities

Pasrba convention offers a wide range of activities for youth from showing to education to recreation. For questions contact Sarah Lovell [pasrbayouth@gmail.com](mailto:pasrbayouth@gmail.com)

### **ARBA sanctioned rabbit and cavy show-**

There are 2 all breed shows, one Saturday and one Sunday as well as many single breed specialty shows. The all breed shows have a separate youth show where youths 18 and under can exhibit. These shows are all day of show entry which means you should arrive about 7am and enter and pay for your animals that day.

### **Youth Contests:**

There are 8 contests only open to youth which judge your knowledge and accomplishments in various aspects of rabbits and cavies: Achievement, Management, Royalty, Breed ID, Judging and educational exhibits. There is no cost. All of these contests require pre-entry. For descriptions, forms and online entry go to [www.pasrba.org/youth](http://www.pasrba.org/youth). Assistance is available to contestants with disabilities and to young contestants. Please visit the website for a full description of requirements.

**Achievement and management-** These contests judge your project based on how much you have achieved and how well you manage your herd. It is a pre-entry contest based on your answers to a number of questions. Attendance at convention is not required. ARBA and PaSRBA principal or associate membership is required.

**Royalty-** This contest selects representatives for PaSRBA for the year based on achievement as well as knowledge, judging and interview skills. ARBA and PaSRBA principal or associate membership is required.

**Presentations-** *(King, Queen, and any youth 15-18 years old)* - You have to give a three to five minute promotional talk including visual aids. Talks are to be performed by the contestant without help except for special circumstances with prior approval. We have had everything from cavy history humor to necropsy discussions to photography to diseases. The topic, presentation style, visual aids, costumes, etc are

entirely open. The presentation is supposed to be for the general public to promote rabbits and/or cavy. The best way to think of how they will be judged is: If you were on the stage at the PA Farm Show would 1) the general public be interested and stay to watch 2) Will it teach them anything? 3) Will it change their view of rabbits and cavy in some positive way? If you win, you will give the talk at the PaSRBA banquet so make sure your visual, audio or anything else can be seen from 50' away. A powerpoint projector and audio system will be available.

**Showmanship-** *(all royalty contestants as well as any youth)* PASRBA has adopted the ARBA showmanship format and score sheet and will be using it at all events run by PASRBA. We would encourage all clubs and counties to follow suit. Categories will be offered of pre-junior, junior, Intermediate and senior.

**Breed ID-** Identify 25 breeds of rabbits or Cavy.

**Judging-** Judge 4 classes of 4 rabbits and see how you compare to our ARBA judges. Entry is available on-line up to 1 week before convention. Open to any youth.

**Educational Exhibits-** Bring in all those rabbit/cavy crafts, project books, stories and anything else. It just has to have a direct connection to rabbits or cavy. Open to any youth. Pre-entry appreciated but entries may be brought and entered between 8 – 10am Saturday.

### **PaSRBA Banquet and Youth Fun Hour**

This is a must do for all youth. Come join us for a great dinner, find out who the Distinguished Service, Youth Choice Award and Lifetime Service award winners are and all Youth Contest winners. Then we'll crown our Royalty Court and will follow with a youth fun hour. Don't forget- Any PaSRBA member, youth or adult is welcome to nominate members for the Distinguished Service Award.

### **Youth Activity Schedule**

(check [WWW.PASRBA.ORG](http://WWW.PASRBA.ORG) after Jan 15 in case of changes)

#### **Friday 8am-**

Setup for the shows starts. Youth are welcome and

encouraged to come help. Free lunch is provided to all workers. If you can't make it at 8am, come later since we have major work underway from 8am until 4pm

### **Friday 6-9 pm**

Royalty contests  
Breed ID and Judging  
King and Queen presentations  
Showmanship  
Art Sweinhart Memorial Youth Breeder Award judging  
Voting will occur for the Youth Choice Award.

A Potluck Dinner will be held for all Youth Contest participants and their families. Please bring a dish to share.

### **Saturday 8am**

Royalty written exam

### **Saturday before 10am**

Educational- deliver to youth table between 8-10am. Please put name and age on the back of the entry or the inside cover of books. All entries should be related to rabbits and cavy in some way. Please pick up by noon on Sunday.

### **Saturday- Times to be assigned**

Royalty interviews

**Saturday-** Please check the banquet page for time.  
PaSRBA banquet and fun hour.

**Sunday-** Please check rabbit hopping section for time.

Performance Sports competition in the far end of the youth hall.

### **Sunday- noon**

Tear down starts throughout showroom. Rabbits must be removed from cages. Help is welcome and needed. All affiliated clubs are supposed to provide at least 2 workers for tear down. With lots of assistance, we can be done by 6PM.

## The Art Sweinhart Memorial “Youth Breeder Award”



The purpose of this contest is to challenge and reward youth rabbit breeders who understand fully why and what they are doing to improve their rabbitry/caviary.

The contest will be judged on the exhibitors' ability and knowledge to select the best matings to produce better offspring. Exhibitors will present the animals and an oral reasoning of their selections to achieve their goals to the judges. This contest is open to any PaSRBA

youth member (affiliated or principle) Rules and Application will be available online at [www.pasrba.org](http://www.pasrba.org)

**A HOP AND A STITCH LLC**  
Custom embroidery, sublimation, and  
heat transfers (aka white toner printing)

[monica@ahopandastitch.com](mailto:monica@ahopandastitch.com)  
[www.ahopandastitch.com](http://www.ahopandastitch.com)

The advertisement features a stylized, painterly illustration of a laptop, a smartphone, and a hand holding a needle and thread, all set against a background of colorful, abstract brushstrokes.



# PASRBA RABBIT HOPPING



## **Performance Sports Show Secretary**

Sally Turner

rabbit\_ranchers@yahoo.com

201 Port Lane, Philipsburg, PA 16866

## **Assisting Show Secretary**

Sydney Turner

sydt17@gmail.com

## **Show Information**

Sunday, February 6, 2022  
starting at 9am. in the West Hall

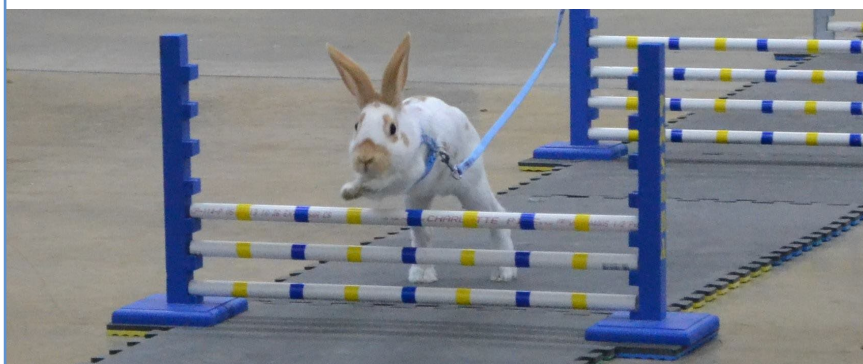
## **Pre-Entry \$6 per entry**

One entry fee of \$6 for each rabbit entered,  
which will apply to one class entered.

On day of show you can also add classes for an entry fee of  
\$6 /class for the rabbits they have pre-entered.

## **Courses/Events offered:**

Straight\_Line • High Jump • Long Jump • Agility



**FOR COMPLETE RULES AND COURSE  
DESCRIPTIONS GO TO [WWW.PASRBA.ORG](http://WWW.PASRBA.ORG)**



# PASRBA 2ND ANNUAL CAVY AGILITY COMPETITION



**When: Sunday,  
February 6, 2022  
Start at 11:00 AM.**

You may come anytime between 11:00 AM and 1:00PM to run your Cavy. Times will be recorded and prizes given out after 1:00 PM

**Where: Hopping Room  
Sign up on Registration Form  
Before 8AM Sunday, February 6 - \$6**

All cavies - pedigreed, crossbreeds, pets - ARE ELIGIBLE to compete - they must be 22 ounces, 3 months old, healthy, not pregnant, tagged. Their toenails must be clipped (they run on carpet.)

The course is a "NOVICE" course which is maximum 175 inches long and has 6 obstacles. (Weave poles, maze, tunnels, bridges, one texture, pause box) The cavy has 3 minutes to complete the course to the igloo and carrot at the end. No leashes are allowed.

The handler/exhibitor must be minimum 5 years old, able to safely carry and control their cavy and able to follow the judges direction. A parent can be present to help with verbal directions But may not touch the animal.

Handlers that are registered may practice/warm up From 11AM-1PM and 3-4PM on Saturday and 9-10:30 AM on Sunday before the event.

**FOR COMPLETE RULES AND COURSE  
DESCRIPTIONS GO TO [WWW.PASRBA.ORG](http://WWW.PASRBA.ORG) OR  
THE AHARC CLUB SITE.**

# **Lebanon Valley Expo Center**

80 Rocherty Rd.  
Lebanon PA 17042  
[www.lebexpo.com](http://www.lebexpo.com)

---

## **From Points South**

- Pick up rte 72 in Lancaster
  - Go north approx 20 miles
  - First traffic light after Fairview Golf Course turn RIGHT onto Rocherty Rd.
  - Go thru next traffic light.
  - You're at the Expo
- 

## **From Points North**

- Access Route 72 South thru Lebanon Approximately 2 miles south of Lebanon turn left onto Rocherty Rd.
  - Go thru next traffic light
  - You're at the Expo
- 

## **From Pa Turnpike (rte 76)**

- Take Exit #266 Lancaster-Lebanon
- Route 72 North approx 5 miles to
- At 2nd traffic light turn right on Rocherty Rd.
- Go thru next traffic light
- You're at the Expo



# PaSRBA Raffle Table

**PaSRBA Raffle Table contact:**

**LuAnn Gallagher at 717-413-3926; [luannrg@gmail.com](mailto:luannrg@gmail.com)**

**Elizabeth Gallagher at 717-413-6285;  
[elizabethgallagher1414@gmail.com](mailto:elizabethgallagher1414@gmail.com)**

PaSRBA will be sponsoring a raffle table both Saturday and Sunday. Rabbit clubs are encouraged to donate a basket. Win bragging rights as the club whose baskets received the most tickets! And, have your club's name posted on the PaSRBA website and in the newsletter. Vendor donations are greatly appreciated. They can be dropped off at the raffle table Friday night or Saturday morning. Also, anyone that donates a new item with a receipt will receive 1 free raffle ticket per new item. Cash donations will also be greatly appreciated to be used to purchase raffle items.

## PaSRBA Rabbit Raffle

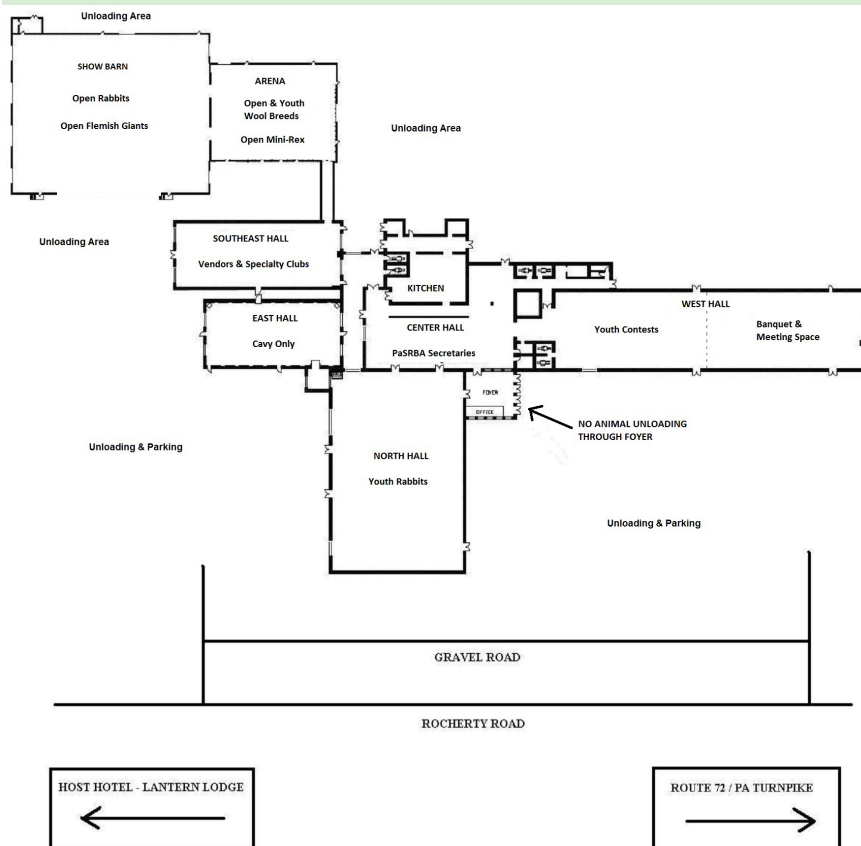
If you are interested in donating a rabbit/cavy; please contact LuAnn Gallagher or Elizabeth Gallagher contact information listed above.

We will accept pedigreed animals only and pedigree must accompany animal. It should be marked as a show quality or pet quality animal and have any disqualifications listed.

Live animals will only be accepted Saturday and Sunday morning of the raffle.



# 2022 PaSRBA Floor Plan



## 24 Hour Car Washes

**Carriage House Car Wash**  
123 Bowman St, Lebanon, PA 17046

**7th St Car Wash**  
7th &, Miller St, Lebanon, PA 17046

**16th Street Car Wash**  
24 N 16th St, Lebanon, PA 17042

# PaSRBA Overnight Cooping Form

**Coops are available with shavings, first come first served based on date of postmark or date purchased online.**

**ALL REQUESTS MUST BE POSTMARKED BY  
January 14, 2022 NO EXCEPTIONS!**

New for 2022. You can purchase your coop online. Visit <https://bit.ly/2022coopspasrba> to purchase cooping. Absolutely NO phone or e-mail cooping requests will be acknowledged. The cost is \$4.00 per coop, pre-paid, non-refundable, for the weekend from Friday evening when the showroom opens until 11 am Sunday morning. Open and Youth rabbits will be cooped in their respective showrooms, Open Flemish Giants will be cooped near where they will be shown. There will be no cooping set up in the wool room.

Please Note... If you are requesting cooping for a wool breed, they will be housed in the open show hall next to the wool show hall and there WILL be shavings in each coop. You will be responsible for providing risers if you wish to keep your rabbits off the shavings.

-----

Name \_\_\_\_\_

E-mail \_\_\_\_\_

Phone \_\_\_\_\_

Total Number of Youth Rabbits to be Cooped \_\_\_\_\_

Total Number of Open Rabbits to be Cooped \_\_\_\_\_

Total Number of Flemish Giants to be Cooped \_\_\_\_\_

Total Number of Cooped Rabbits \_\_\_\_\_ x \$4.00 = \_\_\_\_\_

**Make checks/money orders payable to PaSRBA  
(NO CASH!)**

Please Mail This Form with Payment to...

Kathy Shea  
2511 Paxtonville Rd  
Middleburg, PA 17842

# National Breed Specialty Clubs

Please Check ARBA.net for most current information

American Rabbit Breeders Association Eric Stewart PO Box 400, Knox, PA16232, 814 797 4129, [www.arba.net](http://www.arba.net). Membership: Adult: (19 & over \$30/year, \$50/3 years. Two adult combination \$30/year, or \$75/3 years. Youth: (18 & under) \$12/year, \$30/years. Family: \$30/year +\$5. Each child, \$75/3 yrs + \$10 per child. International Memberships add \$10/year handling fee. International members (excluding Canada) add \$40/year for the Domestic Rabbits Magazine.

ARBA Convention 2022, October 30-November 2, 2022, Reno, Nevada, Reno Sparks Convention Center, 4590 S. Virginia Street, Reno, NV89502. Hosted by CRCS, <https://www.facebook.com/RabbitandCavyShows>

American Argente Brun Rabbit Club Neva Shanahan 9 Hunter Dr Epping, NH 03042 603-585-8431 [argentebrunclub@gmail.com](mailto:argentebrunclub@gmail.com) Membership: Single Adult \$10.00, 3 Years – \$25.00; Youth \$8.00, 3 Years \$20.00; Family \$25.00, 3 Years \$60.00; Couples \$15.00, 3 Years \$35.00 2/20 Sanction Fees: OPEN \$10.00 – YOUTH \$8.00 Send Sanction Requests to: Neva Shanahan (address above) Send sanction reports to [argentebrunclub@gmail.com](mailto:argentebrunclub@gmail.com) Find Us on Facebook!

American Belgian Hare Rabbit Club Susanna Johnston 2529 Avenue D Council Bluffs, IA 51501 712-256-0351 [AmericanBelgianHareClub1@gmail.com](mailto:AmericanBelgianHareClub1@gmail.com) Membership: Membership Annual Adult \$10; Youth\* \$7.50 \*(Youth under the age of 18 – Add \$5 to Foreign Memberships – Membership expires one year from the 1st day of the month in which you join or renew.) Sanction Fees: OPEN or YOUTH \$5.00 (Youth is free when requested with Open for same show) Send Sanction Requests/Show Reports to: Gary Walton 15330 Sharp Rd Rockton, IL 61072 [Americanbelgianhareclub2@gmail.com](mailto:Americanbelgianhareclub2@gmail.com) [www.belgianhareclub.com](http://www.belgianhareclub.com)

American Beveren Rabbit Club Meg Whitehouse 480 Colts Neck Road Farmingdale, NJ 07727 (732) 547-7404 [wwhiteh404@aol.com](mailto:wwhiteh404@aol.com) Membership: Adult – \$10; \$25 3 yrs; Youth – \$8; \$20 3 yrs; Family (or 2 adults) – \$15; add additional \$4/each child under 18; \$40 + \$4/child 3 yrs; Sanction Fees: OPEN \$7.00 – YOUTH \$5.00 Send Sanction Requests/Show Reports to: Meg Whitehouse (address above) [www.freewebs.com/beverens/](http://www.freewebs.com/beverens/)

American Britannia Petite Rabbit Society Scott Stockwell 94 Cottage Street Cranston, RI 02910 3/20 (617) 291-5688 [ABPRS77@gmail.com](mailto:ABPRS77@gmail.com) Membership: Adult – \$10, \$25 3 yrs; Youth – \$7.50, \$20 3 yrs; H/W – \$15, \$40 3 yrs; Family – \$15 (plus \$2.00/child), \$40 3 yrs (plus \$5/child); Foreign surcharge – \$3; Sanction Fees: OPEN \$16.00; YOUTH \$8.00; YOUTH SANCTION FREE IF REQUESTED WITH OPEN SANCTION Send Sanction Requests/Show Reports to: Karah Boersma 9091 Taylor Street Zeeland MI 49464 [seagull553@hotmail.com](mailto:seagull553@hotmail.com) 616-566-7961 [www.abprs.com](http://www.abprs.com)

American Cavy Breeders Association Reed Tibbetts 470 San Remo Drive Princeton, TX 75407 214-724-7541 [acbasec@yahoo.com](mailto:acbasec@yahoo.com) Membership: Adult – (New) \$25, (Renewal) \$20, 3 yrs (New) \$60, 3 yrs (Renewal) \$55; Youth – (New) \$20, (Renewal) \$15, 3 yrs (New) \$45, 3 yrs (Renewal) \$40; Family – (New) \$30, (Renewal) \$25, 3 yrs (New) \$75, 3 yrs (Renewal) \$70; Canadian Members Add \$10/yr, Other Foreign Add \$20/yr; Sanction Fees: OPEN \$10.00 – YOUTH \$8.00 Send Sanction Requests to: Reed Tibbetts 470 San Remo Drive Princeton, TX 75407 214-724-7541 [acbasec@yahoo.com](mailto:acbasec@yahoo.com) Send Sweepstakes to: Ken McCracken 13550 Spring Cypress Rd. Cypress, TX 77429, or email to: [ACBASweeps@Gmail.com](mailto:ACBASweeps@Gmail.com) [www.acbaonline.com](http://www.acbaonline.com)

American Checkered Giant Rabbit Club David Freeman 1119 Klondyke Rd Milford, OH 45150 (513) 576-0804 [davidfreemanacgrc@yahoo.com](mailto:davidfreemanacgrc@yahoo.com) Membership: (Adult) 1 year – \$20; 3 years – \$50; H/W – 1 year – \$25, 3 years – \$65; Foreign (Adult) 1 year – \$20; 3 years – \$50; (\$5 each additional member in the same household) Sanction Fees: OPEN ONLY \$10.00 4/20 Send Sanction Requests to: David Freeman (address above) Send Show Reports to: Sue Gillispie 11601 Maries Road 302 Vienna, MO 65582 or email to: [acgrcsweepstakes@yahoo.com](mailto:acgrcsweepstakes@yahoo.com) [www.checkeredgiant.org](http://www.checkeredgiant.org) American Chinchilla Rabbit Breeders Assoc. Ramona Richardson 6595 E Robinson Road Bloomington, IN 47408 [richardsonsfed@sbcglobal.net](mailto:richardsonsfed@sbcglobal.net) 812-339-2333 Membership: Individual, Adult – \$9; Youth – \$6; 3 Yrs Adult – \$20; Youth – \$12; H/W – \$13; 3 Yrs – \$30; Family – \$13 + \$2/child; Life Membership: \$100.00; All foreign add \$5.00 to above fees. Sanction Fees: OPEN \$6.00 – YOUTH \$4.00 Send Sanction Requests and show reports to: Anita Trautwein 804 Exchange Street Alden, New York 14004 716-937-6433 [havanamom28@gmail.com](mailto:havanamom28@gmail.com) [www.acrba.net](http://www.acrba.net)

American Dutch Rabbit Club Shannon Krolikowski 1877 S. Bridgeview Lane Midland, MI 48640 (989) 600-1588 amdutchclub@aol.com Membership: Adult – (New) \$15, (Renewal) \$10; Youth – (New) \$13, (Renewal) \$8; Husband/Wife – (New) \$19, (Renewal) \$14; Family – (New) \$25, (Renewal) \$20; Sanction Fees: OPEN \$12.00; YOUTH \$10.00 Open and Youth Combined \$18.00 Must be requested at the same time. If five or less shown in Open or five or less shown in Youth, free sanction within the following year of original show date. Sanction chair must be notified of the above within 30 days after original show date. Send Sanction Requests to: Shannon Krolikowski (address above) Send Show Reports to: Tiffany Wayne 32881 790th Ave www.cremedargent.weebly.com Ellendale, MN 56026 (507) 383-0849 football\_chick\_8@hotmail.com www.dutchrabbit.com

American Dwarf Hotot Rabbit Club Terry L. Robertson 2019 Nicodemus Rd Westminster, MD 21157 443-881-3513 terry@mameandop.com Membership: Adult – \$10, 3 yrs \$25; Youth – \$7, 3 yrs \$17; Husband/Wife (2 Adults) – \$15, 3 yrs \$35; Family – \$15 (\$2/child); Lifetime (1 Adult) – \$150, (2 Adults) \$200; Foreign (All Membership Types) – add \$10/yr service charge; NEW MEMBERS ONLY – Add \$5 S&H Per Household for Materials Sanction Fees: OPEN \$10.00 – YOUTH \$6.00 Send Sanction Requests to: Terry L Robertson (address above) Send Show Reports to: Angie Finkbeiner 29100 27 Mile Rd Lenox, MI 48048 (586) 260-2640 DHSweeps10@yahoo.com www.adhrc.com

American English Spot Rabbit Club John Scheiwe 3914 W Norway Ct Bloomington, IN 47404 812-606-3426 aesrcsecretary@gmail.com All awards won at an ARBA Convention must be picked up at the Convention. None will be mailed by AESRC. Inc. Membership: Adult – (New) \$15, (Renewal) \$10; Youth – (New) \$12, (Renewal) \$7; Husband/Wife – (New) \$18, (Renewal) \$13; Family – (New) \$25, (Renewal) \$20 (plus \$2/child); Foreign same as US (all fees in US funds) All foreign memberships and/or sanction fees must be paid in US currency or drawn on a US bank, including postal and regular moneyorders. Sanction Fees: OPEN \$12.00 – YOUTH \$7.00 “500 Mile Rule” AESRC Inc’s National All English Spot Show is held on a Saturday. Send Sanction Requests to: John Scheiwe (address above) Send Show Reports to: Andrew Stutler 77 Janquil Lane Levittown, PA 19055 AESRCsweeps@gmail.com americanenglishspot.weebly.com

American Federation of New Zealand Rabbit Breeders David Cardinal E4076 State Hwy 22-54 Waupaca, WI 54981 715-281-9286 afnzbseecty@gmail.com Membership: Adult – \$15, (Renewal) \$13; Youth – \$13, (Renewal) \$8; Husband/Wife – \$17, (Renewal) \$15; Family – \$28, (Renewal) \$23; Canada – \$16, (Renewal) \$14; Foreign – (New or Renewal) \$40/person; Lifetime – \$240/person or \$250 for H/W; Sanction Fees: OPEN \$12.00; YOUTH \$8.00 Send Sanction Requests/Show Reports to: David Cardinal (address above) www.newzealandrabbitclub.net

American Fuzzy Lop Rabbit Club Paula Grady PO Box 267 Elbert, CO 80106 (303) 648-9976 fuzzythinking@att.net Membership: Individual, Adult/Youth – \$17; Renewal – \$12; 3 Yrs – \$37; Renewal – \$32; Family – \$22 + \$2 per child; Renewal – \$17 + \$2 per child; 3 Yrs – \$54 + \$6 per child; Renewal – \$48 + \$6 per child; Canadian – \$22 US/yr (Single); All other foreign – \$35 US/yr (Single) Sanction Fees\*: OPEN \$10.00 – YOUTH \$8.00 Sanction requests must be received no less than 7 days prior to the show date or the sanctioning fees are doubled. Send Sanction Requests/Show Reports to: Rob Grady PO BOX 267 Elbert, CO 80106 (303) 648-9976 afircsweepschair@att.net afirc.weebly.com \* Any sanction request not received at least 15 days prior to the show date will require double fees to be paid per request. No post-show sanctions are approved. See website for details.

American Harlequin Rabbit Club Nickie Raines 2100 Bluebird DR Missoula, MT 59808 406-214-0904 ahrsecretary@outlook.com 7/20 Membership: Adult – \$5; Youth – \$4; Husband/Wife – \$7; Family – \$10; Sanction Fees: OPEN \$6.00; YOUTH \$6.00 Youth free when requested with open. Send Sanction Requests/Sweepstakes/Show reports to: Nickie Raines 2100 Bluebird Dr Missoula, MT 59808 406-214-0904 ahrsecretary@outlook.com

American Himalayan Rabbit Association Errean Kratochvil 2159 Bendway Dr Port Charlotte, FL 33948 (727) 686-9075 mailto:himi1@yahoo.com Membership: Adult – \$10, \$25 3 yrs; Youth – \$8, \$20 3 yrs; Husband/Wife – \$12, \$30 3 yrs; Family – \$12, \$30 3 yrs; Sanction Fees: OPEN \$7.00 – YOUTH \$7.00 OPEN/YOUTH COMBINATION – \$10.00 (Combination sanction fee applies only if applied for a same time and is for the same date.) Send Sanction Requests to: Errean Kratochvil (address above) Send Show Reports to: Teri Peterson PO Box 818 Pagosa Springs, CO 81147 teribunnies@gmail.com www.himalayanrabbit.com



American Hopping Association for Rabbits & Cavies Tammy Mazzaferro 1557 Cadiz Rd Wintersville, OH 43953 (740) 346-6306 otwbunnies@gmail.com Membership: 1 Year Single Adult – \$10; Youth – \$6; Family – \$16.00 (2 people at the same address plus \$4 for each additional youth); 3 Year Single Adult – \$27; Youth – \$15; Family – \$45 (2 people at the same address plus \$9 for each additional youth); Lifetime – \$100; Foreign – 1 Year Single Adult – \$5; Youth – \$3; Family – \$8 (2 people at the same address, plus \$2 each youth); Foreign 3 Year Single Adult – \$12; Youth – \$6; Family \$21 (2 people at same address, plus \$4 each youth); Lifetime – \$50 sites.google.com/site/americanhoppingassociation/

American Mini Lop Rabbit Club Judy Todd 1617 Douglas Lane Lebanon, IN 46052-1402 765-482-3921 hjtodd0060@att.net Membership: Adult – (New) \$15, \$40 3 yr, (Renewal) \$12, \$30 3 yrs; Youth – (New) \$12, \$30 3 yr, (Renewal) \$8, \$20 3 yrs; Husband/Wife – (New) \$20, \$52 3 yr, (Renewal) \$15, \$40 3 yrs; Family – (New) \$25, \$70 3 yr, (Renewal) \$20, \$55 3 yrs; Sanction Fees: OPEN \$13.00; YOUTH \$10.00 US funds only Send Sanction Requests/Show Reports to: Nicole Schmitt 505 E Henry Clay St #104 Whitefish Bay, WI 53217 414-217-1512 amlrc.sweeps@gmail.com www.amlrcsweeps.com www.amlrc.net

American Netherland Dwarf Rabbit Club Cindy Stelloh PO Box 573 Mukwonago, WI 53149 414-659-9001 andrcsectreas@yahoo.com Membership: USA-Adult New: \$25, \$60/3 yrs; Renewal: \$18, \$50/3 yrs USA-Youth New: \$20, \$45/3yrs; Renewal \$13, \$35/3 yrs USA-Family (2) New: \$30, \$65/3yrs; Renewal: \$20, \$52/3yrs USA-Family (3+) New: \$35, \$70/3yrs; Renewal: \$25, \$57/3yrs CA/MX-Adult New: \$35, \$90/3 yrs; Renewal: \$28, \$80/3 yrs CA/MX-Youth New: \$30, \$75/3yrs; Renewal \$23, \$65/3 yrs CA/MX-Family (2) New: \$40, \$95/3yrs; Renewal: \$30, \$82/3yrs CA/MX-Family (3+) New: \$45, \$100/3yrs; Renewal: \$35, \$87/3yrs INTL-Adult New: \$50, \$135/3 yrs; Renewal: \$43, \$125/3 yrs INTL-Youth New: \$45, \$120/3yrs; Renewal \$38, \$110/3yrs INTL-Family (2) New: \$55, \$140/3yrs; Renewal: \$45, \$127/3yrs INTL-Family (3+) New: \$60, \$145/3yrs; Renewal: \$50, \$132/3yrs Sanctions: Open \$15.00, Youth: \$10.00 Send Sanction Requests/Show Reports to: Richard Gehr 190 N First Ave Coal City, IL 60416 rwgehr@aol.com www.andrc.com

American Polish Rabbit Club Joan Thies 5163 County Rd 37 Fort Lupton, CO 80621 303-358-1344 aprcsecretarytreasurer@gmail.com 9/20 Membership: Adult – \$12, \$30 3 yr; Youth – \$10, \$25 3 yr; Husband/Wife (or 2 individuals at the same address) – \$15, \$35 3 yr; Family – \$18, \$40 3 yr; Foreign Membership – Add \$10/year to above fees; Sanction Fees: OPEN \$15.00; YOUTH \$10.00 Send Sanction Requests and show reports to: Joan Thies 5163 County Rd 37 Fort Lupton, CO 80621 303-358-1344 polishsweeps@gmail.com https://www.americanpolishrabbitclub.com/

American Sable Rabbit Society Kate Parrish, ASRS Secretary/Treasurer ASRS.secretary@gmail.com Membership Dues: Adult: \$10/year, \$25/3 yrs, Youth: \$81yr, \$20/3 yrs Family: \$14/yr \$35/3 yrs. \*Note Family Membership is only for the first two youth. After second youth each additional youth is \$3.00 for the first year and \$5.00 for three years. Two Members same household: \$12/yr \$30/3 yrs Sanction Fee: \$8.00 for Open Sanction; Youth Sanction is \$5.00 or FREE if requested with the Open Sanction. Send Sanction requests to: Donna Brown 2635 N Hurricane Creek Rd McEwen, TN 37101 615-415-5786 http://americansables.org

American Satin Rabbit Breeders Association Sherry Garrett 18902 7 Mile Rd Reed City, MI 49677 231-832-1450 asrba.secretary@gmail.com Membership: Adult – (New) \$17, \$35 3 yr, (Renewal) \$12, \$30 3 yr; Youth – (New) \$14, \$28 3 yr, (Renewal) \$9, \$23 3 yr; Husband/Wife – (New) \$19, \$40 3 yr, (Renewal) \$14, \$35 3 yr; Family – (New) \$22, \$46 3 yr, (Renewal) \$17, \$41 3 yr; Sanction Fees: OPEN \$20.00 – YOUTH \$10.00 Send Sanction Requests to: Sherry Garrett (Address Above) Send Show Reports to: Jennie McCammon ASRBAsweeps@gmail.com American Standard Chinchilla Rabbit Breeders Assoc. 10/20 Allen Bush 328 Welcome House Road Perkasi, PA. 18944 (978) 303-7775 allentambush@verizon.net Membership: Adult – \$8, \$22 3 yr; Youth – \$5, \$12 3 yr; Husband/Wife – \$12.00, \$27 3 yr; Foreign service charge \$3 per year. Sanction Fees: OPEN/YOUTH \$7.50 (YOUTH free if requested with OPEN and held same day) Send Sanction Requests/Show Reports to: Allen Bush (address above) www.ascrba.net

American Tan Rabbit Specialty Club Paula Schutz 105 Ulsterville Rd Pine Bush, NY 12566 (845) 744-3900 atrscsecy@gmail.com Membership: Single (New) – \$13, (Renewal) \$8; Youth (New) – \$10, (Renewal) \$5; Husband/Wife (New) – \$17, (Renewal) \$12; Family (New) – \$20, (Renewal) \$15; Lifetime – \$80, (New) \$75 (Renewal) Sanction Fees: OPEN \$10.00; YOUTH \$4.00 Free sanction given for future show if no Tans are shown. Send Sanction Requests & Sweepstakes Reports to: Paula Schultz (address above) www.atrsc.org



American Thrianta Rabbit Breeders Assoc. Tina Reif 205 Mountain Laurel Ln West Union, SC 29696 (864) 718-1118 [treif@clermson.edu](mailto:treif@clermson.edu) Membership: Single Adult – \$10; Youth – \$7; Husband/Wife – \$15; Family – \$15.00 plus \$5.00 for each additional youth or adult at the same address; Foreign – Add \$10 US funds per year service fee; Sanction Fees: OPEN \$10.00 – YOUTH \$7.00 Send Sanction Requests/Show Reports to: Tina Reif (address above) [atrba.net](http://atrba.net)

Breeders of the American Rabbit NSC Krista Hudgens-Gleaves 1282 E Texas PO Box 2213 Denison, TX 75021 [treasurer.americanrabbits.org@gmail.com](mailto:treasurer.americanrabbits.org@gmail.com) Membership: Individual, Adult – \$10; 3 Yrs Adult – \$25; Husband/Wife – \$15; 3 Yrs – \$40; Family – \$15 + \$1/child; 3 yrs – \$40 + \$3/child Sanction Fees: OPEN \$10.00 – YOUTH \$5.00 (Youth is free when requested with Open for same show) Send Sanction Requests/Show Reports to: Krista Hudgens-Gleaves 1282 E Texas PO Box 2213 [treasurer.americanrabbits.org@gmail.com](mailto:treasurer.americanrabbits.org@gmail.com) [www.americanrabbits.org](http://www.americanrabbits.org)

Champagne d'Argent Rabbit Federation Tanya Zimmerman PO Box 376 Marion WI 54950 715-823-5020 [Champagnesecretary@gmail.com](mailto:Champagnesecretary@gmail.com) Membership: Adult (New) – \$15, \$32 3 yrs; Adult (Renew) – \$10, \$27 3 yrs; Youth (New) – \$13; Youth (Renew) – \$8; Husband/Wife (New) – \$17, \$38 3 yrs; Husband/Wife (Renew) – \$12, \$33 3 yrs; Foreign add \$15 surcharge per year if newsletter is mailed. Sanction Fees: OPEN \$10.00; YOUTH \$8.00 Send Sanction Requests/Show Reports to: 12/20 Tanya Zimmerman [Champagnesecretary@gmail.com](mailto:Champagnesecretary@gmail.com)

Cinnamon Rabbit Breeders Assoc. Marsha Leblanc 166 West 131 Cut Off, LA 70345 985-677-1053 [Shasha2old@yahoo.com](mailto:Shasha2old@yahoo.com) Membership: Adult – \$10, 3 yrs \$25; Youth – \$5, 3 yrs \$10; Husband/Wife – \$15, 3 yrs \$40; Family \$15/yr plus \$2/youth, 3 yrs \$40 plus \$5/youth Sanction Fees: OPEN \$10, – YOUTH \$6, Combination: \$10 Send Sanction Requests to: Caley Gredig PO Box 282 DeBeque, CO 81630 970-274-1248 Show Reports may be e-mailed to: [crbasweeps@gmail.com](mailto:crbasweeps@gmail.com) [www.cinnamonrabbitbreeders.org](http://www.cinnamonrabbitbreeders.org)

Creme d'Argent Rabbit Federation Travis West 2290 Factory Rd Albany, OH 45710 (740) 591-7423 [cremedargent@hotmail.com](mailto:cremedargent@hotmail.com) Membership: Adult – (New) \$13, \$30 3 yrs, (Renewal) \$10, \$27; Youth – (New) \$10, \$21 3 yrs, (Renewal) \$7, \$18 3 yr; Husband/Wife – (New) \$18, \$43 3 yrs, (Renewal) \$15, \$40 3 yr; Family – (New) \$18 (plus \$4/child), \$43 3 yrs, (plus \$9/child), (Renewal) \$15 (plus \$4/child), \$40 3 yrs (plus \$9/child) Sanction Fees: OPEN \$10.00; YOUTH \$10.00; (OPEN/YOUTH Combined \$15.00) Must provide \$2 for Best Senior, Best Intermediate, Best Junior and Best Breed if more than 5 or more are shown. Send Sanction Requests/Show Reports to: Travis West (address above) [www.cremedargent.weebly.com](http://www.cremedargent.weebly.com)

Dwarf Papillon Rabbit Club of America Linda J. Bell P.O. Box 292360 Phelan, CA. 92329-2360 [DPRCA.clubsec@yahoo.com](mailto:DPRCA.clubsec@yahoo.com) 13/20 Membership: Individual Adult – \$20, 3yrs – \$50; Husband/Wife (2 adults, same address) – \$35, 3 yrs – \$80; Family (up to 3 Youth) – \$45, 3 yrs – \$105; Youth – \$10 per year, may purchase multiple years. Sanction Fees: OPEN \$15.00 – YOUTH \$10.00; Youth Sanction Free. if requested with Open Send Sanction Requests & Show Reports to: Linda J. Bell (address above) DPRCA website: [www.Dwarfpapillon.com](http://www.Dwarfpapillon.com)

Florida White Rabbit Breeders Association Jane Meyer 1795 N. 1800 E. Rd Thawville, IL 60968 (815) 735-1548 [Floridawhitesec@gmail.com](mailto:Floridawhitesec@gmail.com) Membership: Adult – \$10.00, \$27 3 yrs; Youth – \$8, \$21 3 yrs; Husband/Wife (or Partners) – \$13, \$34 3 yrs; Family – \$18, \$50 3 yrs; Sanctions: \$10 open, \$5.00 youth, \$10.00 open/youth combination Send Sanction Requests/Show Reports to: Jane Meyer (address above) [www.fwrba.net](http://www.fwrba.net)

Giant Chinchilla Rabbit Association Mary Ellen Stamets 37 Brown St Flemington, NJ 08822-1536 (908) 782-0462 [mrabbit67@yahoo.com](mailto:mrabbit67@yahoo.com) Membership: Adult – \$9, \$25 3 yrs; Youth – \$5, \$12 3 yrs; Husband/Wife – \$13, \$37 3 yrs; Family – \$13 (plus \$2/child), \$37 3 yrs (plus \$2/child) Sanction Fees: OPEN \$8.00 – YOUTH \$3.00 (Youth free if requested with Open) Send Sanction Requests/Show Reports to: Mary Ellen Stamets (address above) [giantchinchillarabbits.webs.com](http://giantchinchillarabbits.webs.com)

Havana Rabbit Breeders Association Tanya Zimmerman PO Box 376 Marion, WI 54950 14/20 (715) 823-5020 [havanasecretary@yahoo.com](mailto:havanasecretary@yahoo.com) Membership: Adult – \$8, \$20 3 yrs; Youth – \$6, \$14.50 3 yrs; Husband/Wife – \$11.50, \$29.50 3 yrs; Family – \$11.50 (\$3.50/child); Foreign Membership – Add \$5 to each option; Sanction Fees: OPEN \$10.00; YOUTH \$5.00; OPEN/YOUTH Combination \$10.00 Send Sanction Requests/Show Reports to: Tanya Zimmerman (address above) [www.havanarb.net](http://www.havanarb.net)

Holland Lop Rabbit Specialty Club Tess Fragulia 10589 Hillview Road Windsor, CA 95452 707-480-7471 hlrcsec@comcast.net Send Sanction Requests/Show Reports to: Cheri Bushee PO Box 27 Spencerville, IN 46788 cheri48@aol.com Sanction Fees: OPEN \$15.00; YOUTH \$10.00 Membership: Adult -\$15; Youth -\$12; Husband/Wife -\$19; Family -\$27 Canada/New Mexico: Add \$5 per year service charge. All other Foreign: Add \$10 per year service charge. www.hlrcs.com

Hotot Rabbit Breeders International Club Secretary: Ella Konency 2505 NW 116th St Vancouver, WA 98685 360-974-9594 hrbiclubmembership@gmail.com Membership: Adult -\$10; Youth -\$5; Husband/Wife -\$14; International Fee -\$18; Sanction Fees: OPEN \$5.00 - YOUTH \$5.00 Send Sanction Requests/Show Reports to: Michael Brackett hrbiclubsanctions@gmail.com www.hrbi.online

Lop Rabbit Club of America 15/20 Sandy Bennett 59 Maple Knoll Ct Prosperity, SC 29127 lrcasec@gmail.com Membership: Adult - (New) \$15, (New 2 yr) \$20, (Renewals) \$10/year; Youth - (New) \$10, (New 2 yr) \$14, (Renewals) \$7/yr; Husband/Wife - (New) \$20, (New 2 yr) \$30, (Renewal) \$15/yr; Family - (H/W fee plus \$5/child/year); Foreign add \$6/year; Only 1 copy of the Lop Guidebook is sent per household. Only 1 copy of the Lop Digest (newsletter) is sent per household unless otherwise requested. Sanction Fees: OPEN \$16.00; YOUTH \$9.00 Send Show Reports and Sanction Requests to: Richard Gehr 190 N First Avenue Coal City, IL 60416 rwgehr@aol.com www.lrca.us

National Angora Rabbit Breeders Club Laurie Penterman 7983 Outagamie Rd. Kaukauna, WI 54130 Phone 920-740-8772 pentermanlaurie@yahoo.com Membership: Adult -\$10, \$18 2 yrs, \$27 3 yrs; Youth -\$5, \$10 2 yrs, \$15 3 yrs; Rabbitry (two people at the same address) -\$15, \$25 2 yrs, \$35 3 yrs; Family -\$20, \$30 2 yrs, \$40 3 yrs Sanction Fees: Open & Youth: \$15.00 for all four breeds-Youth free; Youth Only: \$5.00 for all four breeds; Fair Shows only: One breed \$5.00 or \$12.00 for all four breeds. Send Sanction Requests/Show Reports to: Robin Olson 414 Woodside Drive Harrisburg, NC 28075 704-305-0385 narbcswsweeps@gmail.com www.nationalangorarabbitbreeders.com

National Californian Rabbit Specialty Club, Inc. Carrol Hooks 8100 Kensington Lane Harrisburg, NC. 28075 (254)721-2909 calclubsecretary@gmail.com Membership: Adult -\$15, 3 yrs \$42; Youth -\$10, 3 yrs \$28; Husband/Wife -\$20, 3 yrs \$55; Foreign -\$25; 3 yrs \$75.00; Additional youth in same family \$5.00 for 1 year / \$15.00 for 3 years Sanction Fees: OPEN \$15.00 - YOUTH \$8.00 - OPEN/YOUTH \$20.00 Sweepstakes: David Cardinal calspointkeeper@gmail.com http://www.californianrabbitspecialtyclub.com/

National Federation of Flemish Giant Rabbit Breeders, Inc. Wayne Bechdel 117 Hollow Road Lockhaven, Pennsylvania 17745 (570) 769-6059 wbechdel@wildblue.net Membership: Adult/Youth - (New) \$20, (Renewal) \$15; Husband/Wife - (New) \$20, (Renewal) \$15; Family - (New) \$22 + \$3.00 per child, (Renewal) \$20 + \$2.00 per child; Canada (Single) - (New) \$30, (Renewal) \$20; All other foreign (Single) - (New) \$40, (Renewal) \$35; Sanction Fees: OPEN \$10.00; YOUTH \$8.00; OPEN/YOUTH Combination \$15.00 (Must use same show secretary) Send Sanction Requests/Show Reports to: 16/20 Wayne Bechdel (address above) www.nffgrb.org

National Jersey Wooly Rabbit Club Doug Brown 505 Main Street Norwalk, WI 54648 njwrcsecretary@gmail.com Membership: Adult - (New) \$15, \$35 3 yrs, (Renewal) \$12, \$25 3 yr; Youth - (New) \$12, (Renewal) \$9; Family (2 Adults and any children under 19 residing at same address) - \$25, \$60 3 yr; First Class option for newsletter - \$5/year; Foreign Surcharge - \$15/year; Sanction Fees: OPEN \$10.00; YOUTH \$10.00 Send Sanction Requests/Show Reports to: Nicole Schmitt 505 East Henry Clay St #104 Whitefish Bay, WI 53217 njwrcsweeps@gmail.com www.njwrcsweeps.com www.njwrclub.org

National Lilac Rabbit Club of America Robert Koch N3650 Oak Ridge Rd Waupaca, WI 54981 715-281-3106 bobkoch384@att.net Membership: Adult -\$8, \$20 3 yr; Youth -\$5, \$12 3 yr; Husband/Wife -\$15, \$25 3 yr; Foreign -\$8, \$20 3 yr; Sanction Fees: OPEN \$5.00 - YOUTH \$5.00 (Youth free if requested with Open) Sanction Requests/Show Reports to: Robert Koch (address above) www.nlrba.org

National Mini Rex Rabbit Club Doug King 2719 Terrace Ave Sanger, CA 93657 559-974-7189 NMRRCSecretary@gmail.com Membership: Adult -\$25, \$55 3 yrs; H/W -\$30, \$70 3 yrs; Family -\$45, \$115; Youth -\$25, \$55 3 yrs; Adult Foreign -\$50, \$110 3 yrs; H/W Foreign -\$60, \$140 3 yrs; Family Foreign \$90, \$230 3 yrs 17/20 Sanction Fees: OPEN \$15.00; YOUTH

\$15.00; OPEN/YOUTH COMBO \$30.00 Send Sanction Requests to: Doug King (address above)  
Send Show Reports to: Margaret Potter 1401 W Sian Drive Sanford, MI 48657 989-430-9161  
nmrrcopensweeps@yahoo.com www.nmrrc.net

National Rex Rabbit Club Arlyse DeLoyola PO Box 1465 Cave Junction, OR 97523 nationalrex@yahoo.com Membership: Individual Adult or Youth (New) – \$20 (Each additional person at same address – \$5), 3 yr \$40 (Each additional person at same address – \$12); (Renewal) \$15 (Each additional person at same address – \$5), 3 yr \$30 (Each additional person at same address – \$12); Foreign: (New) – \$30 (Each additional person at same address – \$5); 3 yr \$70 (Each additional person at same address – \$12), (Renewal) \$25 (Each additional person at same address – \$5); 3 yr \$60 (Each additional person at same address – \$12) Sanction Fees: OPEN \$10.00; YOUTH \$7.00 Send Sanction Requests to: Arlyse DeLoyola (address above) Send Show Reports to: Chris Christian 2540 First Lakeview Cove Hernando, MS 38632 901-461-7277 rexsweeps@yahoo.com nationalrexcrc.org

National Silver Rabbit Club Ryan McBride 62405 County Road 7 Elkhart, IN 46517  
SilversSecretary@gmail.com Membership: Individual – \$7, \$17.50 3 yr; Youth – \$5, \$10 3 yr; Husband/Wife – \$10; \$25 3 yrs; Family – \$12.50, \$30 3 yr; Sanction Fees: OPEN/YOUTH \$7.00 (YOUTH free when requested with OPEN) Send Sanction/Show Reports to: Ali Price Address Above www.silverrabbitclub.com

National Silver Fox Rabbit Club Kimberly Esquilla 648 Forestbrook Rd Myrtle Beach, SC 29579  
843-450-9019 nsfrc.sec@gmail.com Membership: Adult – \$10; Youth – \$7.50; Husband/Wife – \$12; Family – \$12 (plus \$3/person/year at same address); Sanction Fees: OPEN \$7.50; YOUTH \$7.50 (YOUTH free if requested with OPEN sanction) Send Sanction Requests/Show Reports to: Kimberly Esquilla (address above) 843-450-9019 nsfrc.sec@gmail.com www.nsfrc.com

North American Lionhead Rabbit Club Heather Simpkins 1328 Mt. Vernon Ave, STE 94 Marion, OH 43302 740-360-5462 loftylions@gmail.com Membership: Adult- \$20/1 year, \$40/3 years; Youth \$15/1 year, \$30/3 years; Family \$25 1/year, \$55/3 years. Sanctions: Open \$15, Youth \$10 (free if purchased with Open for same show location/Date). Send Sanction Requests to Heather Simpkins (address above) http://www.lionhead.us

Palomino Rabbit CoBreeders Association Carolyn Wright 108 Justin Davis Lane Smithville, TX 78957 512-237-4164 secy@palominorabbits.org Adult new; \$9+\$3/yr, \$22+\$3/3 yrs; Adult renewal \$9/yr, \$22/3 yrs Youth new; \$6+\$3/yr, \$14+\$3/3 yrs; Youth renewal \$6/yr, \$14/3 yrs Husband/Wife; \$14+\$3/yr, \$34+\$3/3 yrs; Husband/Wife renewal \$14/yr, \$34/3 yrs; Family 1 adult new; \$9+\$3.5 per child+\$3/yr, \$22+\$9.5 per child+\$3/3 yrs Family 1 adult renew; \$9+\$3.5 per child/yr, \$22+\$9.5 per child/3 yrs Family 2 adults new; \$14+\$3.5 per child+\$3/yr, \$34+\$9.5 per child+\$3/3 yrs Family 2 adults renew; \$14+\$3.5 per child/yr, \$34+\$9.5 per child/3 yrs Foreign (new); All foreign memberships add \$2 per person per year +\$3 Foreign (renewal); All foreign memberships add \$2 per person per year 19/20 Sanctions: All breed show: Open \$12, Youth \$7, Combo \$12; Specialty Pal show: Open \$7, Youth \$4.5, Combo \$7 (Youth is always free with paid open) Send Sanction Requests & Show Reports to: Carolyn Wright (address above) www.palominorabbits.org

Rhineland Rabbit Club of America Diane Hassinger 273 Sawyer Rd Prospect, PA 16052 RRCA.  
Secretary@gmail.com Membership: Adult (New) – \$15, \$30 3 yr, (Renewal) \$10, \$25 3 yr; Youth (New) – \$11, \$20 3 yr, (Renewal) \$6, \$15 3 yr; Husband/Wife (New) – \$20, \$45 3 yr, (Renewal) \$15, \$40 3 yr; Family (2 adults & up to 3 children) – (New) \$30, \$75 3 yr; (Renewal) \$25, \$70 3yr; Foreign: Adult (New) – \$25, \$55 3 yr, (Renewal) \$20, \$50 3 yr; Youth (New) – \$20, \$45 3 yr, (Renewal) \$15, \$40 3 yr; Husband/Wife (New) – \$30, \$75 3 yr, (Renewal) \$25, \$70 3 yr; Family (2 adults & up to 3 children) – (New) \$40, \$95 3 yr; (Renewal) \$35, \$90 3yr; Sanction Fees: OPEN \$8.00 – YOUTH \$3.00 (Youth free with paid Open) Send sanctions and show reports to club secretary: Diane Hassinger RRCA.secretary@gmail.com Website: www.rhinelanderrabbits.com

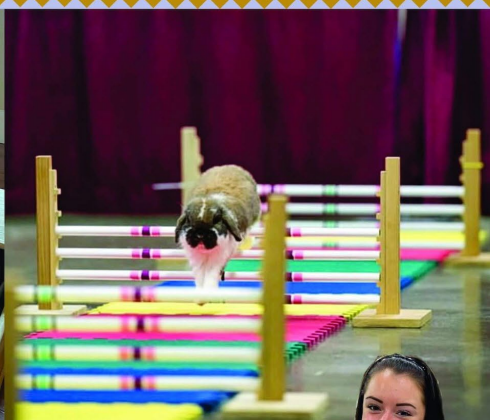
Silver Marten Rabbit Club McKenna Lynch P.O. Box 485 Grass Lake, MI 49240 517-748-1554  
twistedxmartens@gmail.com Membership: Adult (New) – \$12, \$21 3 yr, (Renewal) \$7, \$18 3 yr; Youth (New) – \$9, \$15 3 yr, (Renewal) \$5, \$12 3 yr; Husband/Wife (New) – \$16 (add \$3/child), \$30 3 yr (add \$5/child), (Renewal) \$10 (add \$2/child), \$25 3 yr (add \$5/child); Foreign – Add \$5 surcharge per membership per year. Sanction Fees: OPEN \$8.00 – YOUTH \$4.00 Send Sanction requests to: McKenna Lynch P.O. Box 485 Grass Lake, MI 49240 517-748-1554 twistedxmartens@gmail.com Send show reports to: Scott Rudolph silvermartensweeps@gmail.com www.silvermarten.org

# ADVENTURE BUNNY

## RABBIT HOPPING AND AGILITY

Quality Equipment  
Designed to go where you go!

Rabbit hopping, rabbit agility, even cavy agility, we do it all!



[info@rabbithopping.com](mailto:info@rabbithopping.com)

[www.rabbithopping.com](http://www.rabbithopping.com)

*Our business is hopping!*

